



Eagle



www.alsri.com

Volume 17 Issue 3

9th Annual IRS & Friends West Golf Tournament

June 2011

Inside This Issue

President's Message 1

Red Rock Casino Info 2-3

Bear's Best LV/TPC LV 4-5

Starting Sheet 6

Tournament Info 7

Schedule of Events 8

Bear's Best Las Vegas & TPC Las Vegas are our new courses !



One of the par 4s at Bear's Best Las Vegas

The diabolic #2 hole (par 3) at TPC Las

Message from the President:

Welcome to the 2011 IRS and Friends West Coast Golf Tournament!

After only a one year stint at the Siena GC and Arroyo GC at Red Rock where we encountered numerous course condition problems last year, we decided to move our tournament courses to Bear's Best Las Vegas and TPC Las Vegas. These are two of the finest golf courses in the greater Las Vegas area. Both golf courses are located within 10 minutes of the Red Rock Hotel. These upgrade caused a slight change in our golf package price. Since this event is a "Cost Only" basis, the price changes of the package rate reflects the increase in green fees at these two new golf courses. The green fee secured for our group is less than the "Local Las Vegas Residents Rate" and is much lower than the standard rate if you tried to book on your own. We believe that once you have an opportunity to play them, you will be satisfy with the conditions of these courses. Bear's Best was rated the "Best Golf Course in Las Vegas" in 2010. The course represents 18 of the very best holes of the golf course designed by Jack Nicklaus. TPC Las Vegas is one of less than 30 golf courses owned by the PGA Tour and only one of the 14 TPC Courses that have public access. TPC Las Vegas is currently the host of the Senior PGA Las Vegas Classic Tournament held every year in October.

We hope that you enjoyed your play at these golf courses! And what can I say about the Red Rock Resort and Casino, if you stayed at Red Rock last year, I'm certain that you enjoy the luxury suite, complimentary in-room internet access, extra ordinary pools, complimentary spa access (\$25 value), in-house 16 screen Regal movie theatre and the 72 lane bowling alley!! Red Rock features many upscale restaurants to suit your taste and if you prefer just a regular meal, there is a fast food center inside the resort where you can chow down on Burgers, Mexican dishes, Chinese fast food, Italian cuisines..Etc.

The ALSRI Golf Club would like to express our sincere gratitude and appreciation to Eugene Yen of Red Rock Casino, Steve Woo of Bear's Best Las Vegas and Nicole Tassone of TPC Las Vegas for their utmost cooperation and support . We could not have done it without them.

Stephen Klotz, President—ALSRI Golf Club

- Cocktail Reception at 6:00P @ Victor's Suite (19th floor).
- Driving Range is Open at 6:00 A.M. on Monday & Tuesday
- 7:30P A Private Texas Hold'em Poker Tournament on Monday night @ Red Rock Poker Room (Tentative)
- Banquet Dinner @ 6:00P.M. on Tuesday night @ Red Rock 's The Veranda Room (Located in the convention area - fifth floor).
- Our group get a complimentary daily pass to the Red Rock's Spa. Our guests get 20% off all spa services.



Red Rock Resort & Casino

Red Rock Casino, Resort and Spa Information
11011 W. Charleston Blvd., Las Vegas, CA 89134 (702) 797-7777
Www.redrocklasvegas.com

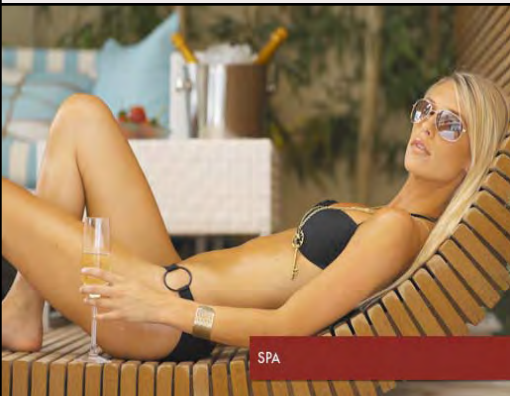
Directions:

From Los Angeles, I-15 to I-215 West for approx. 12 miles to Charleston Exit. Hotel is on your right (Please use East Garage when checking-in. It's the closest garage to the hotel lobby). Red Rock is located approx. 10 miles from the Las Vegas Blvd. Both tournament courses are located within 10 minutes of Red Rock Hotel.

From McCarran International Airport, take I-215 West to Charleston Exit. See below Complimentary Shuttle Service info below.



POOL BACKYARD



SPA

Red Rock Complimentary Shuttle Service:

AIRPORT to RED ROCK (Picks up from Level Zero (0), down the glass elevators located between north and south baggage claim areas) 8am, 10am, 12pm, 2pm, 4pm, 6pm, 8pm, 9pm. Estimated travelling time is 30 minutes.

RED ROCK to AIRPORT (drops off at the departures level) 7am, 9am, 11am, 1pm, 3pm, 5pm, 7pm.

FASHION SHOW MALL to RED ROCK (Picks Up at Valet Circle on Fashion Show Drive) 11:40am, 1:40pm, 3:40pm, 5:40pm, 7:40pm, 9:40pm (15 minutes)

RED ROCK to FASHION SHOW MALL (departs from Red Rock Valet) 11:10am, 1:10pm, 3:10pm, 5:10pm, 7:10pm, 9:10pm

Guest Room Amenities:

- Down Comforter
- Flat screen TV
- Marble accented bathroom



Entertainment & Other service:

- 72 lanes bowling alley
- Kid Zone/Game Area
- 20 screens Regal Theatre
- Great Pool area for adults and kids
- Full Service Spa (Complimentary Daily Pass to all our guests)



KING



- Free In room WI-FI Service



CABO MEXICAN RESTAURANT



LUCKY BAR

Dining Options:

- Hachi (Modern Japanese Restaurant)
- T-Bone (Prime Steakhouse)
- Terra Rosa—Fine Italian Restaurant
- Cabo—Mexican Restaurant
- LBS—The Burger Joint
- Grand Café (24 hours coffee shop)
- The Yardhouse (Sport Bar & Micro Brewery)
- Feast Buffet (Breakfast, Lunch and Dinner)
- Food court
- 2 Starbucks Coffee Bar

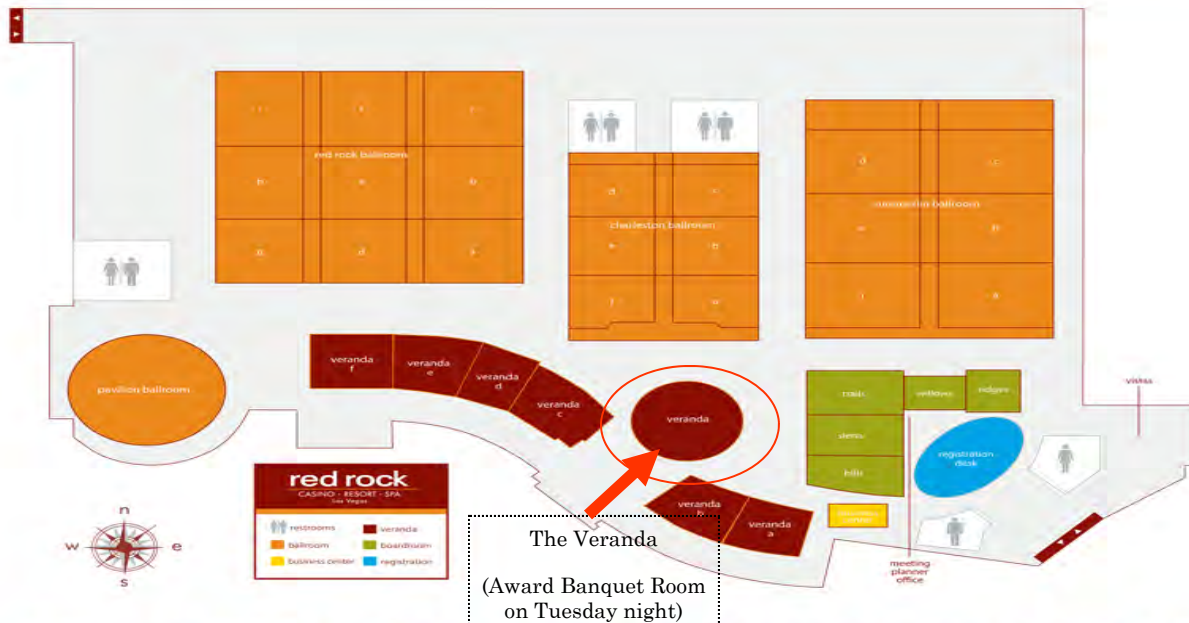


Red Rock Casino, Resort and Spa Information

GROUND FLOOR



5TH FLOOR Meetings and Events



Bear's Best Las Vegas

Bear's Best Las Vegas

11111 W. Flamingo Road

Las Vegas, NV 89135

(702) 605-0649

www.clubcorp.com/clubs/Bear-s-Best-Las-Vegas



Great golf in Las Vegas is easily found at Bear's Best. Located in the upscale, exclusive Ridges neighborhood of the master-planned community of Summerlin, Bear's Best is a high-end daily fee, public Las Vegas golf course focused on providing the best possible Las Vegas golf experience for all our guests. To design our course, Jack Nicklaus selected 18 holes from his more than 200 course designs worldwide and put them into one extraordinary round of Jack Nicklaus golf. Enjoy our incredible Las Vegas golf course on your own or with a group. We can make any golf event with any number of guests a unique, memorable and seamless experience for you and your guests. Bear's Best is the golf club Las Vegas golfers are sure to enjoy and share with their friends.

In addition to our unique Las Vegas golf course, we have one of the best practice facilities in the Las Vegas area, featuring all-grass tees year-round, two practice greens, short game area, three-tiered driving range, Bushnell yardage for precision targets and Titleist NXT range balls set up in a pyramid style. This Jack Nicklaus golf course is designed from the start to give you a premium round of play. Bear's Best Golf Club is the apex of great Las Vegas golf courses. With manicured bent grass greens, challenging and varied hole designs, and immaculate fairway/tee complexes (overseeded in winter to ensure optimal conditions year-round), Bear's Best offers the best conditions in Las Vegas. We also added a state-of-the-art GPS system to enhance your experience.

HOLE	1	2	3	4	5	6	7	8	9	OUT	I	10	11	12	13	14	15	16	17	18	IN	TOT	HCP	NET	
Gold	74.0/147	413	529	441	229	438	398	201	599	453	3701	N	411	317	507	151	461	230	416	537	463	3493	7194		
Blue	71.3/130	370	482	401	195	414	352	184	552	393	3343	I	392	283	497	137	418	211	392	516	439	3285	6628		
White	68.3/122	309	440	374	174	381	336	159	515	353	3041	T	339	266	457	129	370	185	343	500	413	3002	6043		
Handicap		11	5	3	9	1	15	13	17	7		A	6	18	10	16	4	8	14	12	2				
Par		4	5	4	3	4	4	3	5	4	36	L	4	4	5	3	4	3	4	5	4	36	72		
Par		4	4	4	3	4	4	3	5	4	35		4	4	5	3	4	3	4	5	4	36	71		
Red	68.7/116	275	306	323	127	296	244	130	432	274	2407		308	227	396	79	341	130	312	475	368	2636	5043		
Scorer:																									
Attest:																									
Date:																									

Directions to Bear's Best Las Vegas

From Las Vegas International Airport (16.5 miles/20 minutes):

Head South on Las Vegas Blvd. and take the first right after Vacation Village Casino onto I-215 West. Take I-215 West approx. 12 miles to Town Center Drive. Turn left (South) on Town Center Drive. Turn right onto W Flamingo Rd. At the traffic circle, continue straight to stay on Flamingo Rd. Turn left onto Ridgebrook Ct. Turn left on to W Flamingo Rd. to the course on your right.

From Las Vegas Blvd: (11 miles/20 minutes—WATCH YOUR SPEED!!!)

Take Flamingo West for approx. 10.5 miles. After passing I-215, at the traffic circle, continue straight to stay on Flamingo Rd. Turn left onto Ridgebrook Ct. Turn left on to W Flamingo Rd. to the course on your right.

From Red Rock Hotel:(4 miles/9 minutes):

Driving South on I-215 to Town Center Drive and then turn right (South) on Town Center Drive. Turn right onto W Flamingo Rd. At the traffic circle, continue straight to stay on Flamingo Rd. Turn left onto Ridgebrook Ct. Turn left on to W Flamingo Rd. to the course on your right.

Directions to TPC Las Vegas

From Las Vegas Strip (15 miles/20 minutes)

Take I-95 N to exit 42A to merge onto US-95 toward Reno. Take exit 81A to merge onto Summerlin Pkwy. Take the Town Center Dr. Exit. Turn left onto N Town Center Dr. At the traffic circle, take the 3rd exit onto Canyon Run Dr. to the golf course entrance on your right.

From Red Rock Hotel: (3 miles/5 minutes)

From Red Rock Hotel, turn right (East) onto Charleston Blvd. Turn left at Town Center. At the traffic circle, take the 1st exit onto Canyon Run Dr. to the golf course entrance on your right.

(If you're hungry, you might try the \$3.99 breakfast at the Rampart Casino which located a few minutes away from the TPC). You will need to be a member of the Rampart Casino's Club to get this discount).

TPC Las Vegas

TPC Las Vegas

9851 Canyon Run Drive
Las Vegas, NV 89144

(702) 256-2000 / 888-321-5725



Located just beyond the glittering lights of the Las Vegas Strip, TPC Las Vegas offers a serene desert sanctuary and an award-winning championship course that is open to the public to enjoy. The Club has played host to the Las Vegas Senior Classic and most recently shared the Justin Timberlake Shriners Hospitals for Children Open with TPC Summerlin. TPC Las Vegas has received a four-star rating in Golf Digest's "Best Places to Play," been named one of their "50 Best Courses for Great Service in North America", and been ranked among the "Top Ten Best Golf Resorts in the USA" by Condé Nast Traveler. TPC Las Vegas has one of the fastest greens in Las Vegas!! Three putts are inevitable!!!!

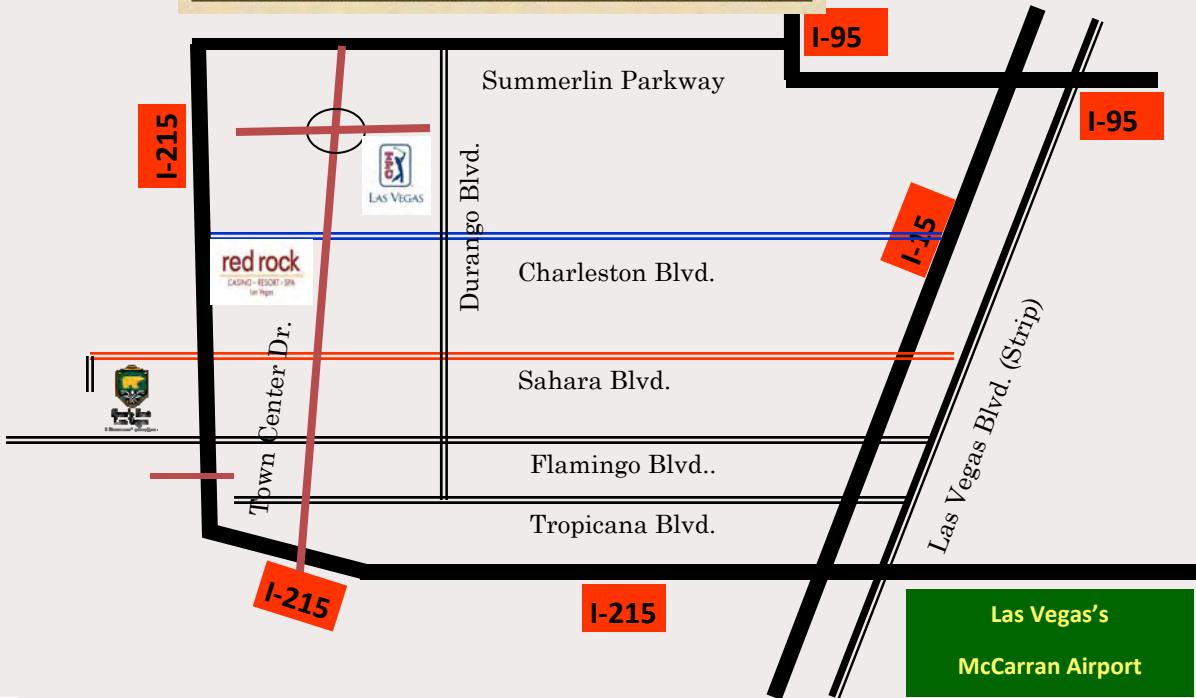


Scenic # 10 par 4 at TPC

		1	2	3	4	5	6	7	8	9	10	11	12	13	14	15	16	17	18	TOTAL		
TPC	359	496	496	544	378	464	399	458	349	357	439	444	445	439	395	402	382	443	448	357	7080	72.4/128
MEN'S BLEINDED	349	484	452	518	363	500	395	433	337	342	406	410	414	396	356	358	385	434	421	334	6769	71.0/128
WHITE	355	501	394	471	358	558	469	376	337	377	408	382	434	364	336	531	360	414	421	318	6336	69.6/127
WOMEN'S BLEINDED	345	451	364	421	358	558	469	376	337	377	408	382	434	364	336	531	360	414	421	318	6336	69.6/127
WOMEN'S WHITE	345	451	364	421	358	558	469	376	337	377	408	382	434	364	336	531	360	414	421	318	6336	69.6/127
GRAND TOTAL	17	9	1	11	15	9	7	3	13	12	4	10	2	16	6	14	8	10				
LADIES GRAND TOTAL	15	9	3	3	11	1	17	7	13	10	6	14	8	12	2	18	4	14				
LADIES BLEINDED	315	410	341	471	355	439	405	348	308	375	397	364	394	333	275	531	393	390	382	277	5489	71.5/128
WOMEN'S WHITE	345	451	364	421	358	558	469	376	337	377	408	382	434	364	336	531	360	414	421	318	6336	69.6/127
SCORES																						
SCORES																						



Galleries at #18 hole during the PGA Las Vegas Senior Classic Golf Tournament.



7:30A Modified Back-Nine SHOTGUN Start

(Men—A&B Blue Tee @ Bear's best, Combo Tee @ TPC)

Men—C, D & Seniors (> 60 years young, Index over 14) - —White tee,

Ladies—Red Tee

Monday, June 13, 2011 - Bear's Best Las Vegas, Tuesday, June 14, 2011 - TPC Las Vegas

Bear's Best Las Vegas June 13, 2011	TPC Las Vegas June 14, 2011	Player1	Player 2	Player 3	Player 4
TBD	1A	Norm Light	Marc Martin	John Freeman	OPEN
TBD	1B	Bill Huntsman	Justin Whitlow	Don Whitlow	Andy Muha
TBD	18A	Paul Decena	Aki Akiyama	Casey Hashimoto	Jeff Shoji
TBD	18B	George Nichols	Howard Wu	Tim Baldwin	Scott Schmidt
TBD	17A	Victor Vannukul	Lee Pongraphan	Ed Chavez	Frank Wun
TBD	17B	David Johns	Richard Wong	Steve Miles	Jim Belcher
TBD	16A	Gerardo Carranza	Ray Fens	Richard Tsuchida	David Tsuchida
TBD	15A	Doug Kunze	Don Kihara	Jon Tamaki	Larry Taylor
TBD	15B	Ron Nestor	Glenn Lester	John Sanchez	Chris Darling
TBD	14A	Brian Klotz	Stephen Klotz	George Murphy	Richard Brawley
TBD	14B	Rick Sackett	Steve Ray	Gary Anderson	Bill Kim
TBD	13A	Bob Merkle	OPEN	John Chabala	Ward Forrest
TBD	13B	Augusto Rodriguez	Irene Rodriguez	Doug MacGregor	Brenda MacGregor
TBD	12A	Mike Litterelle	Greg Voth	Bill Lowing	Richard Wehrt
TBD	11A	Brent Cook	Richard Christian	Terrell Taylor	Rocky Quintana
TBD	11B	William Roberts	Glen Fitz	Mark Zuverink	Leo De LosSantos
TBD	10A	Tom Veatch	John Kelly	Denise Bergsrud	Bert Bergsrud
TBD	10B	Jim Muratore	Frank Muratore	Jim Judd	Craig Weaver
TBD	9A	Jerry Stang	Edd Shoemaker	Doug Beazley	David Vicente
TBD	9B	Greg Edgar	Gene Murphy	Richard Page	Richard Kraus
TBD	8A	John Niederst	John Leahy	Rick Palamara	OPEN
TBD	8B	Manuel Puente	Juan Escalera, Sr.	Juan Escalera, Jr.	Tavy Guzman
TBD	7A	Bernie Skies	Archie Nakaoka	Bob Salcido	Robbie Salcido

Competing Flights & Index (Handicap)

Index

IRS Employees & RETIREES Flights:

Men (Tentative Spread)

- A Flight: 0-13.9
- B: 14.0–17.9
- C: 18.0–25.5
- D: 25.6 and above

Ladies: Open

Men—Friends, Family and Guest Flights:

(Tentative Spread)

Use Calloway System. Will split players evenly among three flights

- A Flight: 0-14.9
- B Flight; 15.0– 18.9
- C Flight: 19.0–25.9
- D Flight 26.0 and above

Ladies: Open

Tee Box

Men: A& B -Use Blue Tee @ Bear's Best. Combo Tee @ TPC
C, D & Senior—Use White Tee
On both courses

Ladies: Use Red Tee

(Tournament Format:

Individual Stroke Play (NET) with Index

Important contact Info:

Victor's cell: 626-476-2439

Red Rock: 702-797-7777

Email: waves3464@hotmail.com, Or victor.v.vannukul@irs.gov

Flights

For the members of IRS L.A. Golf Club, ALSRI Golf Club. We will use your June 2011 index for this event.

IRS Employees & Retirees:

For out-of-town IRS employees and Retirees, we hope to have your USGA index before the start of the tournament on Monday. If any of you have an established USGA index, please email them to Victor as soon as possible at either waves3464@hotmail.com or at victor.v.vannukul@irs.gov or you may give them to Victor, and/or other committee members during the pre-tournament registration on Monday morning. Players without established index, their index will be based on either prior year adjusted scores or index computed under Calloway system.

Friends, Family and Guests Golfers:

We will compute all Friends, Family and Guests golfers either by using prior IRSWEST tournament scores or Calloway Handicapping System (First year participants) unless they can demonstrate that they have established USGA index from his/her own club. If any of you have established USGA index, please email them to Victor at either waves3464@hotmail.com or at victor.v.vannukul@irs.gov or you may give them to Victor, and/or other committee members during the pre-tournament registration on Monday morning.

The tournament committee reserves the right to adjust the index of players who don't have an established USGA index. Your final designated competing flight could be different from the designated flight given to you at the beginning of the tournament.

DOUBLE PAR RULE IS IN EFFECT THIS YEAR TO ENHANCE THE PACE OF PLAY

Prizes & Awards

IRS Employees & RETIREES Flights:

Men with USGA index:

A, B C & D Flight: 1st , 2nd , 3rd and 4th place trophy

Ladies (EMPLOYEES, RETIREES & GUESTS Combined)

1st Place Trophy

Men—Friends, Family and Guests:

A, B & C Flights: 1st , 2nd , 3rd and 4th place trophy

Closest to Pin: (All participants):

All par 3s

Combined Low Gross:

1st Place Employee

1st Place Friends, Guest Family



Above—Red Rock Casino and Resort's Luxury Lobby

Schedule of Events

Sunday, June 12, 2011

Check-in at Red Rock Casino, Resort and Spa at your leisure.

6:00– 9:00P.M. ALSRI President Welcome Party

ALSRI Golf Club President, Stephen Klotz, will host a reception party at Victor's Suite on the 19th floor (Under Victor Van-nukul's Name) from 6:00–9:00P.M. Please come join us for beer, wine, soft drink and delicious appetizers and chance to meet other participants.

Meals: Except for banquet dinner on Tuesday night, you are on your own for the four days. There are many restaurants located inside Red Rock including the Grand Café' which open 24 hours. You can also find many restaurants on Charleston Avenue. **At the nearby Rampart Casino, you can get a special breakfast for \$3.99 if you have its player's card.**

Please remember to arrange a wake-up call for the next day's golf!

Monday, June 13, 2011—Bear's Best Las Vegas GC

Breakfast on your own. It will take you approximately 10 minutes from Red Rock Casino to Bear's Best Las Vegas Golf Course. Please consult with the driving directions to Bear's Best Las Vegas provided on page 4 of this newsletter in advance.

Bear's Best's Driving Range will be open at 6:00A.M. The driving range is located right behind the golf shop.

Please check-in with the ALSRI Golf Club Table for your tournament gifts (Bear's Best Nike Golf Shirt) and Club Glove's Premium Golf Towel. For those that specified their shirt size on their registration form, you will get the exact shirt size you requested. For other, you will get the Large size. We ordered only a few extra shirts and the size exchange will be allowed based on availability

SHOT GUN start at 7:30A.M. (Modified back nine SHOTGUN Start). Please check the pairing sheet on page 6 for your exact starting hole. Some players will start on a different hole on the second day. Please be ready at your cart no later than 7:15A. All Men's A& B flights play from the Blue Tee Marker (6,628 yds. 130/71.3), Men's C&D flights & Men over 60 years old (With Index > 15) play from the White Tee (6,043 yds., 122/68.3). Ladies use Red Tee (5,043 yds., 116/68.7). Long Drive hole to be determined. Ball must be in fairway. Closest to Pin Contest are on all par 3s, Closest-to-the Pin markers are for both Men and Ladies combined!

After play, sign your scorecards and turn them in to a member of the Tournament Committee and/or Bear's Best tourna-

ment staff inside the Golf Shop at the course. **(Tournament Committee Members are as follows: Victor Vannukul, Larry Taylor, Howard Wu, Tim Baldwin and Stephen Klotz).** All decisions on tournament play will be by Committee and their ruling is final.

Of course, the evening is on your own. **You might try to use Red Rock's Spa access to get some exercise, massage or other spa services. Our group gets 20% off all spa services at Red Rock Spa. The daily access to the spa is included with your package fee.**

7:30P Poker Tournament (Tentative) :

Private Texas' Hold' em Poker Tournament will be held at the Red Rock Casino's Poker Room.

Tuesday, June 14, 2011—TPC Las Vegas GC

Breakfast on your own. It will take you approximately 10minutes from Red Rock Casino to TPC Las Vegas Golf Course. Driving range is open at 6:00A.

SHOT GUN start at 7:30 A.M. (Modified back nine SHOT-GUN Start). Please check the pairing sheet on page 6 for your exact starting hole . Please be ready at your cart no later than 7:15A. Men's A & B flights play from the Blue/White Combo Tee Marker (6,336 yds. 128/68.7). Men C&D Flight and Men over 60 years old (with a handicap index of 15 or higher) play from the WHITE Tee Marker (6,047 yds. 127/68.0) (Ladies use RED Tee Marker (4,963 yds., 67.8/117). Long Drive hole to be determined. Ball must be in fairway. Closest to Pin Contest are on all par 3s. Closest-to-the Pin markers are for both Men and Ladies combined!

Afternoon break and your leisure.

6:30 P.M. Banquet Award Dinner at Red Rock's Conference Room located on the fifth floor. Open Bar starts at 6P.

Alcoholic Beverage on your own (Cash Bar). Dinner is a buffet style. Awards and Prizes ceremony immediately after dinner.

Wednesday, June 15, 2011—Check Out

Check-out time is 12 P.M. Make sure that you gather all belongings before check-out. Have a safe trip home. See you all next year!!

Next years event is scheduled from June 10-13, 2012. The tournament courses are the same as 2011. Red Rock is still our host hotel.

Pictures from lasts year!

