



Eagle



Volume 16 Issue 3

8th Annual IRS & Friends West Golf Tournament

June 2010

Inside This Issue

President's Message	1
Red Rock Casino Info	2-3
Siena GC/Arroyo Info	4-5
Starting Sheet	6
Tournament Info,	7
Schedule of Events	8

Red Rock Casino, Resort & Spa, here we come!!!



Message from the President:

Welcome to the 2010 IRS and Friends West Coast Golf Tournament!

After three successful years partnering with the Revere GC in Henderson and our hotel partner, Fiesta Henderson, the IRSWEST committee decided to look for a new host hotel when our 3 year contract with Fiesta Henderson expired after our 2009 event. We are very proud of landing Red Rock Casino & Spa as our hotel host for the next two years. Red Rock Casino is a flagship of the Stations Casino chain (Which is also owned Fiesta Henderson). Its facilities and several upgrade amenities surpass those of Fiesta Henderson. Their standard room features down comforter, flat-screen TV, free in room Wi-Fi and accented marble floor in the bathroom. We even secured a Red Rock's Spa daily

pass for our group. This service alone is value at \$25 per day. After your round of golf, you can enjoy a trip to the exercise room, private pool, steam room and Jacuzzi treatment!!

Both Siena GC & Arroyo GC are two of the best kept secrets in Vegas. I hope you enjoy your time with us this year.

We are considering moving our event back to the original format from Friday-Sunday to accommodate requests from non-IRS participants who could not take the time off when we moved the format to Sunday-Wednesday format in 2007 in order to keep the price of our tournament at the affordable level. Since Red Rock is willing to give us a discount on the weekend, we believe it's the right time to move the tournament back to the original format.

Stephen Klotz, President—ALSRI Golf

- Cocktail Reception at 6:00P @ Victor's Suite (19th floor).
- Driving Range is Open at 6:15 A.M. on Monday & Tuesday
- 7:30P A Private Texas Hold'em Poker Tournament on Monday night @ Red Rock Poker Room (Tentative)
- Professional Photographer will take your group picture on Tuesday
- Banquet Dinner @ 6:00P.M. on Tuesday night @ Red Rock's The Veranda Room (Located in the convention area - fifth floor).
- Our group get a complimentary daily pass to the Red Rock's Spa. Our guests get 20% off all spa services.

Red Rock Casino, Resort and Spa Information
11011 W. Charleston Blvd., Las Vegas, CA 89134 (702) 797-7777
Www.redrocklasvegas.com

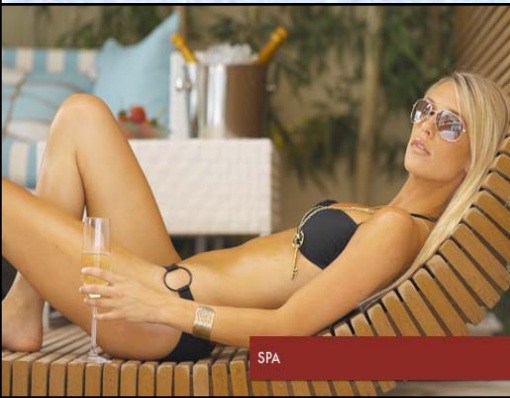
Directions:

From Los Angeles, I-15 to I-215 West for approx 12 miles to Charleston Exit. Hotel is on your right (Please use East Garage when checking-in. It's the closest garage to the hotel lobby). Red Rock is located approx. 10 miles from the Las Vegas Blvd. Both tournament courses are located within 10 minutes of Red Rock Hotel.

From McCarran International Airport, take I-215 West to Charleston Exit. See below Complimentary Shuttle Service info below.



POOL BACKYARD



SPA

Red Rock Complimentary Shuttle Service:

AIRPORT to RED ROCK (Picks up from Level Zero (0), down the glass elevators located between north and south baggage claim areas) 8am, 10am, 12pm, 2pm, 4pm, 6pm, 8pm, 9pm. Estimated travelling time is 30 minutes.

RED ROCK to AIRPORT (drops off at the departures level) 7am, 9am, 11am, 1pm, 3pm, 5pm, 7pm.

FASHION SHOW MALL to RED ROCK (Picks Up at Valet Circle on Fashion Show Drive) 11:40am, 1:40pm, 3:40pm, 5:40pm, 7:40pm, 9:40pm (15 minutes)

RED ROCK to FASHION SHOW MALL (departs from Red Rock Valet) 11:10am, 1:10pm, 3:10pm, 5:10pm, 7:10pm, 9:10pm

Guest Room Amenities:

- Down Comforter
- Flat screen TV
- Marble accented bathroom



Entertainment & Other service:

- 72 lanes bowling alley
- Kid Zone/Game Area
- 20 screens Regal Theatre
- Great Pool area for adults and kids
- Full Service Spa (Complimentary Daily Pass to all our guests)



KING



- Free In room WI-FI Service

Dining Options:

- Hachi (Modern Japanese Restaurant)
- T-Bone (Prime Steakhouse)
- Terra Rosa—Fine Italian Restaurant
- Cabo—Mexican Restaurant
- LBS—The Burger Joint
- Grand Café (24 hours coffee shop)
- The Yardhouse (Sport Bar & Micro Brewery) - **Open on June 6th!**
- Feast Buffet (Breakfast, Lunch and Dinner)
- Food court
- 2 Starbucks Coffee Bar



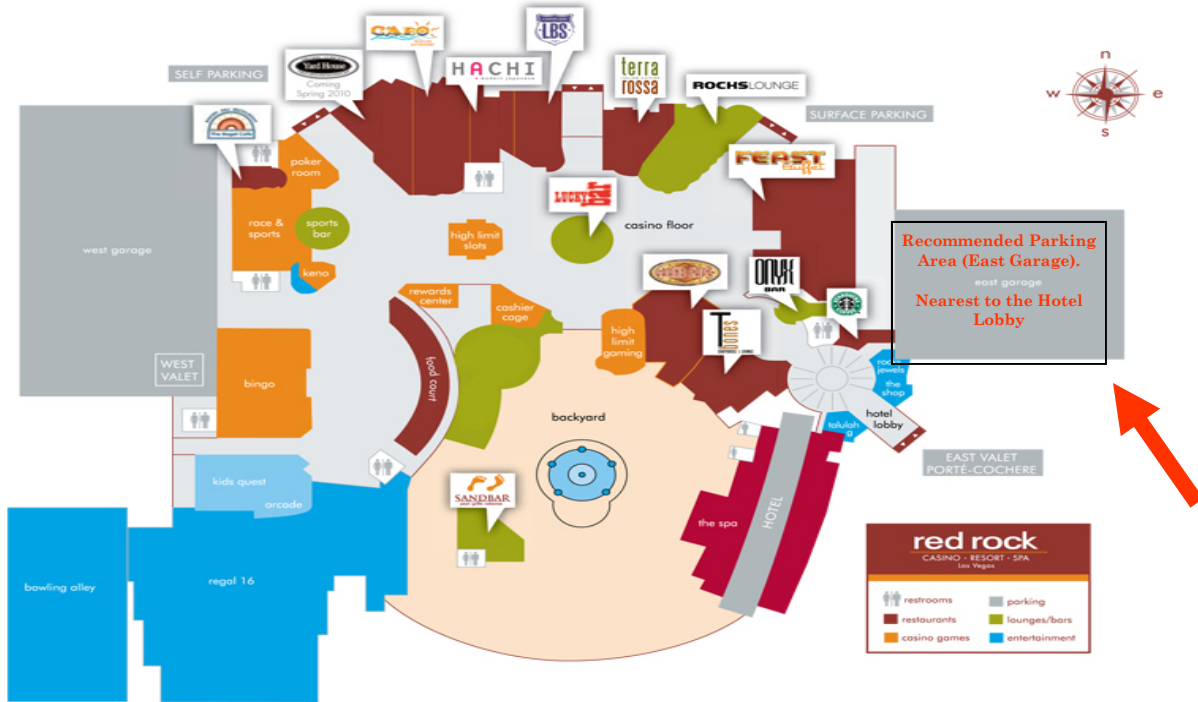
CABO MEXICAN RESTAURANT



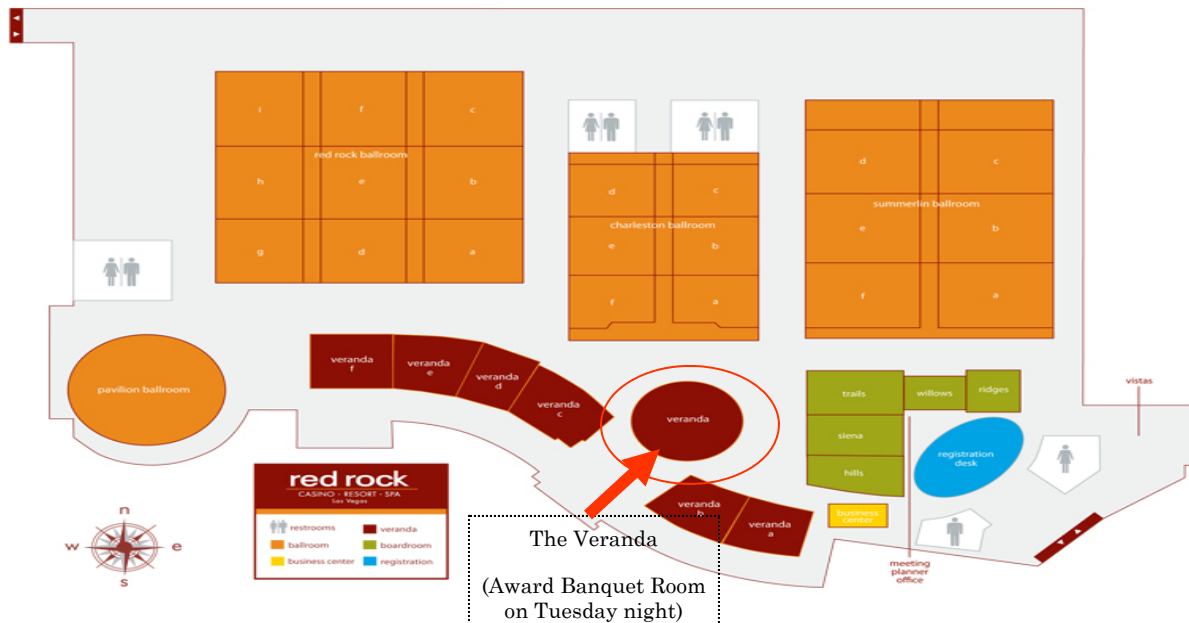
LUCKY BAR

Red Rock Casino, Resort and Spa Information

GROUND FLOOR



5TH FLOOR Meetings and Events



Arroyo at Red Rock Golf Course

Arroyo Golf Club at Red Rock

2250 C Red Springs Drive. Las Vegas,
 NV 89135
 702-258-2300 or
 866-934-GOLF (4653)
 Thearroyogolfclub.com



The Arroyo Golf Club
 Arnold Palmer's Signature Masterpiece
[CLICK HERE FOR MORE INFO >](#)

Experience one of the finest public golf courses that Las Vegas has to offer at the Arroyo Golf Club at Red Rock. The course is nestled alongside the breathtaking Red Rock Canyon and runs throughout the master planned community of Summerlin. Take in the scenic beauty as you enjoy a golfing experience like no other. Not all Las Vegas public golf courses can offer you what Arroyo can and that is the opportunity to play on a course designed by Arnold Palmer himself. One of the best Las Vegas area golf courses, the Arroyo course is a 6,883 yard Arnold Palmer Signature Course with Par 72 links style layout with Bermuda grass fairways and Bent grass greens – overseeded with Rye grass in the cooler winter months. It has five sets of tee boxes to suit golfers' abilities.

THE ARROYO AT RED ROCK											Sunrise Colony Company For Over Thirty Years, Builder of America's Finest Country Club Communities														
HOLE	RATING/SLOPE	1	2	3	4	5	6	7	8	9	OUT	INT	10	11	12	13	14	15	16	17	18	IN	TOT	HCP	NET
GOLD	71.9/124	580	420	186	432	520	416	215	396	368	3533		414	497	225	411	159	340	533	370	401	3350	6883		
BLACK	69.7/121	532	397	171	403	490	386	186	360	341	3266		394	478	199	393	141	324	516	343	379	3167	6433		
BLUE	66.7/112	490	356	135	367	438	363	154	329	306	2938		381	468	193	368	124	292	475	312	353	2966	5904		
HANDICAP		7	3	15	1	11	5	17	9	13			4	10	18	6	16	14	2	12	8				
PAR		5	4	3	4	5	4	3	4	4	36		4	5	3	4	3	4	5	4	4	36	72		
WHITE	70.2/117	451	319	115	343	375	338	143	298	278	2660		321	435	157	341	112	261	442	293	327	2689	5349		
GREEN	66.9/112	422	293	105	311	346	300	115	280	258	2430		285	415	144	294	81	246	411	269	268	2413	4843		
LADIES' HCP		5	1	15	11	3	9	17	13	7			4	10	18	6	16	14	2	12	8				
SCORER:																									
												ATTEST:													DATE:

Directions to Siena Golf Club

From Las Vegas Strip:

Head South on Las Vegas Blvd. and take the first right after Vacation Village Casino onto I-215 West. Take I-215 West approx. 12 miles to Town Center Drive. Turn left (South) on Town Center Drive, a short drive to Siena Monte Avenue, and then turn left.

From I-15 South to I-215:

Take I-15 South to I-215 West. Take I-215 West approx. 11 miles to Town Center Drive. Turn left (South) on Town Center Drive, a short drive to Siena Monte Avenue, and then turn left.

From Red Rock Hotel:

Driving South on I-215 to Town Center Drive and then turn right (South) on Town Center Drive, a short drive to Siena Monte Avenue, and then turn left.

Directions to Arroyo @ Red Rock Golf Club

From Las Vegas Strip:

Head South on Las Vegas Blvd. and turn right onto I-215 West. Take I-215 West approximately 12 miles to Sahara Avenue. Turn left (West) on Sahara, a short drive to Red Rock Country Club, and turn left onto Red Rock Ranch Road. Then, turn right to the West Gate and proceed through the West Gate and turn left at the stop sign at the top of the hill.

From I-15 South to I-215:

From I-215 South then take the Sahara Avenue exit. Turn right (West) onto Sahara, a short drive to Red Rock Country Club, and turn left onto Red Rock Ranch Road. Then, turn right to the West Gate and proceed through the West Gate and turn left at the stop sign at the top of the hill.

From Red Rock Hotel:

Same as above (I-215 South to Sahara Ave exit. Turn right on Sahara, to Red Rock Ranch Road. Right to West Gate.

Siena Golf Course

Siena Golf Club
 10575 Siena Monte Ave.,
 Las Vegas, Nevada 89135
 888-689-6469
www.sienagolfclub.com

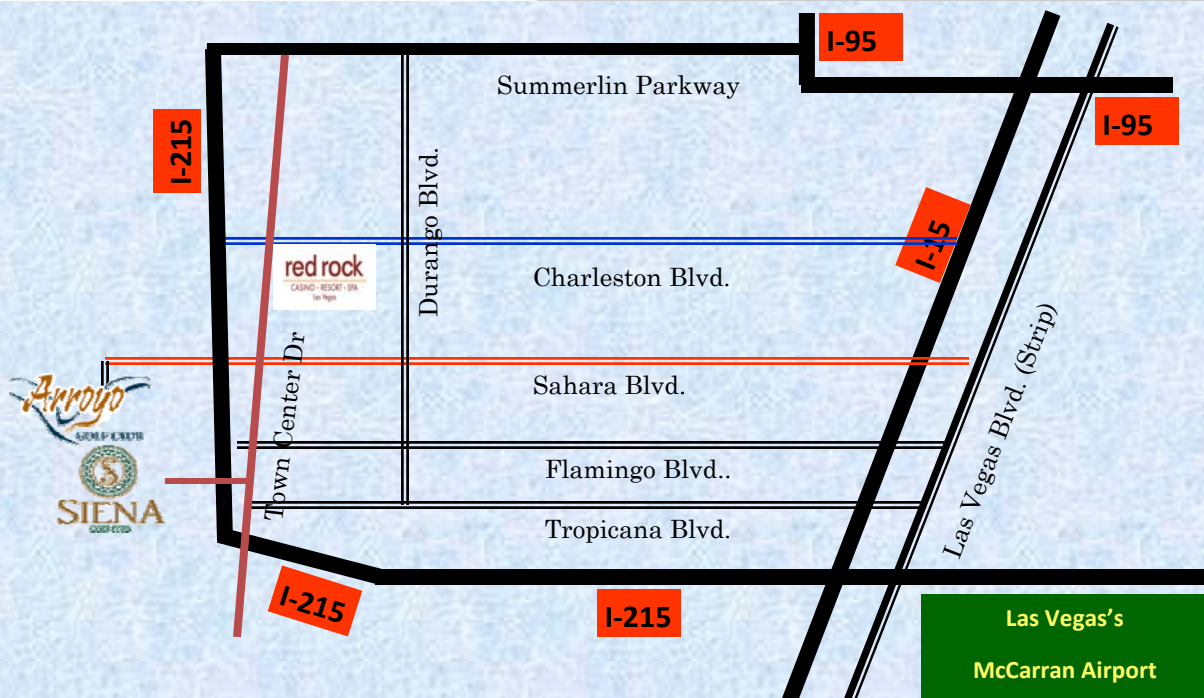


The Siena Golf Club
 Named "Nevada's 2010 Course of the Year"
 by Nevada Golf Course Owners Association
[CLICK HERE FOR MORE INFO >](#)

Siena Golf Course was opened in June 2000. Located in the upscale area of Las Vegas called Summerlin. Siena has received numerous golf award including as "Nevada's 2010 Course of the Year." Siena was designed by the Schmidt-Curley Designed Group. At Siena, the variety in the routing and pacing of holes will keep all levels of golfers entertained from opening tee shot to final tap-in. Siena features an ideal blend of doglegs and straightaway holes, a mix of slender and ample fairways, a balance between benign and rugged green complexes. Yet without exception, the course offers a host of shot-making options and plenty of grassy bail-out areas when the occasional shot gets away.

Siena's routing design is similar to the Revere—Lexington Golf Course. Accurate tee shots are a must. Their greens are well guarded by strategically placed bunkers.

HOLE	1	2	3	4	5	6	7	8	9	OUT	HOLE	10	11	12	13	14	15	16	17	18	IN	OUT
GOLD	420	393	562	448	159	405	194	563	420	3564	GOLD	425	350	506	414	192	514	323	155	400	3279	6843
BLACK	392	383	543	421	136	377	182	552	377	3363	BLACK	420	334	492	407	180	509	316	126	391	3175	6538
BLUE	376	355	525	397	120	355	173	513	335	3149	BLUE	397	300	476	385	166	492	294	115	372	2997	6146
WHITE	349	310	471	362	109	324	151	487	304	2867	WHITE	346	289	462	344	148	469	270	102	342	2772	5639
MEN'S HANDICAP	11	15	5	1	17	9	13	3	7		MEN'S HANDICAP	2	12	8	10	16	4	14	18	6		
PAR	4	4	5	4	3	4	3	5	4	36	PAR	4	4	5	4	3	5	4	3	4	36	72
GREEN	299	291	428	312	103	273	125	446	274	2551	GREEN	303	263	420	311	131	427	242	85	245	2427	4978
LADIES' HDCP	11	13	3	7	17	9	15	1	5		LADIES' HDCP	6	12	4	10	16	2	14	18	8		



7:30A Modified Back-Nine SHOTGUN Start

(Men—Black Tee, Seniors (> 60 years young, Index over 14) —Blue tee, Ladies—White Tee

Monday, June 7, 2010 - Arroyo @ Red Rock Course, Tuesday, June 8, 2010 - Siena Golf Course

Arroyo GC, June 7, 2010	Siena GC, June 8, 2010	Player1	Player 2	Player 3	Player 4
1A	1A	Norm Light	Crissie Breit	Kelly Light	Ken Olivarria
1B	1B	Bob Merkle	John Chabala	Ed Chavez	Eddie Chavez (Jr.)
18A	18A	Paul Decena	Aki Akiyama	Jon Tamaki	Doug Kunze
18B	18B	Larry Taylor	Lou Pacho	Alex Wong	Frank Wun
17A	17A	Jeff Shoji	Casey Hashimoto	Richard Tsuchida	David Tsuchida
17B	16A	Don Reilly	Mike Yi	Howard Wu	Tim Baldwin
16A	16B	Archie Nakaoka	Joe Zamberlan	George Murphy	Richard Brawley
16B	15A	Rick Sackett	Steve Ray	Gary Anderson	OPEN
15A	15B	Augusto Rodriguez	Irene Rodriguez	Doug MacGregor	Brenda MacGregor
15B	14A	David Johns	Richard Wong	Steve Miles	Jim Belcher
14A	13A	Bryan Bean	Jack Ingram	Nick Granado	John Buchanan
13A	13B	Brent Cook	OPEN	Terrell Taylor	Rocky Quintana
13B	12A	Williams Roberts	Glen Fitz	Mark Zuverink	Leo De LosSantos
12A	12B	Tom Veatch	John Kelly	Denise Bergsrud	Bert Bergsrud
11A	11A	Ralph Collinson	Rick Fratanduono	Dominic Cardo	OPEN
11B	11B	Jerry Stang	Edd Shoemaker	Stephen Klotz	Brian Klotz
10A	10A	Richard Palamara	Gene Murphy	Stan Shost	Richard Kraus
10B	10B	John Niederst	John Leahy	Greg Edgar	OPEN
9A	9A	Manuel Puente	Juan Escalera	Juan Escalera, Jr.	OPEN
9B	9B	Bernie Skiles	Steve Gomez	Bob Salcido	Robbie Salcido
8A	8A	Jim Muratore	Charles Muratore	Scott Schmidt	Gerry Reese
8B	8B	Jim Judd	Craig Weaver	Victor Vannukul	OPEN

Competing Flights & Index (Handicap)

Index

Flights

Prizes & Awards

IRS Employees & RETIREES Flights:

Men (Tentative Spread)

- A Flight: 0-13.9
- B: 14.0–17.9
- C: 18.0–25.5
- D: 25.6 and above

Ladies: Open

Men—Friends, Family and Guest Flights:

(Tentative Spread)

Use Calloway System. Will split players evenly among three flights

- A Flight: 0-14.9
- B Flight; 15.0– 18.9
- C Flight: 19.0–25.9
- D Flight 26.0 and above **Ladies: Open**

Men: Use **Black Tee**

Ladies: Use **White Tee**

Seniors (60 yrs and over) with index over 14: Use Blue Tee.

Seniors (60 years and over) with index under 13.9, use Black Tee,

(Tournament Format: Individual Stroke Play (NET) with Index

Important contact Info:

Victor’s cell: 626-786-2356

Red Rock: 702-797-7777

Siena GC: 888-689-6469

Arroyo GC: 866- 8934-4653 (GOLF)

Email: waves3464@hotmail.com, Or victor.v.vannukul@irs.gov

For the members of IRS L.A. Golf Club, ALSRI Golf Club. We will use your June 2010 index for this event.

IRS Employees & Retirees:

For out-of-town IRS employees and Retirees, we hope to have your USGA index before the start of the tournament on Monday. If any of you have an established USGA index, please email them to Victor as soon as possible at either waves3464@hotmail.com or at victor.v.vannukul@irs.gov or you may give them to Victor, and/or other committee members during the pre-tournament registration on Monday morning. Players without established index, their index will be based on either prior year adjusted scores or index computed under Calloway system.

Friends, Family and Guests Golfers:

We will compute all Friends, Family and Guests golfers either by **using prior IRSWEST tournament scores or Calloway Handicapping System (First year participants) unless they can demonstrated that they have established USGA index from his/her own club.** If any of you have established USGA index, please email them to Victor at either waves3464@hotmail.com or at victor.v.vannukul@irs.gov or you may give them to Victor, and/or other committee members during the pre-tournament registration on Monday morning.

The tournament committee reserves the right to adjust the index of players who don’t have an established USGA index. Your final designated competing flight could be different from the designated flight given to you at the beginning of the tournament.

IRS Employees & RETIREES Flights:

Men with USGA index:

A, B C & D Flight: 1st , 2nd & 3rd place trophy

Ladies (EMPLOYEES, RETIREES & GUESTS

Combined)

1sr Place Trophy

Men—Friends, Family and Guests:

A, B & C Flights: 1st , 2nd & 3rd place trophy

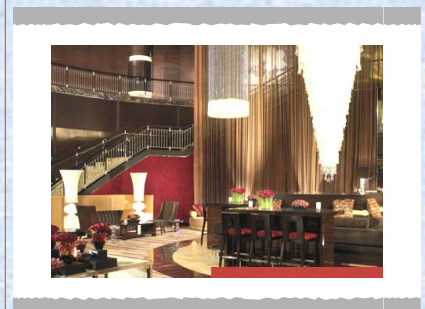
Closest to Pin: (All participants):

All par 3s

Combined Low Gross:

1st Place Employee

1st Place Friends, Guest Family



Above—Red Rock Casino and Resort’s Luxury Lobby

Schedule of Events

Sunday, June 6, 2010

Check-in at Red Rock Casino, Resort and Spa at your leisure.

6:00– 9:00P.M. ALSRI President Welcome Party

ALSRI Golf Club President, Stephen Klotz, will host a reception party at Victor's Suite on the 19th floor (Under Victor Vannukul's Name) from 6:00—9:00P.M. Please come join us for beer, wine, soft drink and delicious appetizers and chance to meet other participants.

Meals: Except for banquet dinner on Tuesday night, you are on your own for the four days. There are many restaurants located inside Red Rock including the Grand Café' which open 24 hours. You can also find many restaurants on Charleston Avenue. **At the nearly Rampart Casino, you can get a special breakfast for \$1.99 with if you have its player's card.**

Please remember to arrange a wake-up call for the next day's golf!

Monday, June 7, 2010—Golf at Arroyo GC

Breakfast on your own. It will take you approximately 7 minutes from Red Rock Casino to Arroyo Golf Course. Please consult with the driving directions to Arroyo provided on page 4 of this newsletter in advance. Arroyo is located in the gated community and you must enter the course through the west gate's guard house.

Arroyo's Driving Range will be open at 6:15A.M. Range Shuttle Service Cart will take you to the practice area every 15 minutes.

Please check-in with the ALSRI Golf Club Table for your tournament gift (Siena Logo Nike Golf Shirt). For those that specified their shirt size on their registration form, you will get the exact shirt size you requested. For other, you will get either Large or Extra Large size. No exchange will be allowed this year.

SHOT GUN start at 7:30A.M. (Modified back nine SHOTGUN Start). Please check the pairing sheet on page 6 for your exact starting hole. Some players will start on the difference hole on the second day. Please be ready at your cart no later than 7:15A. All Men play from the Black Tee Marker. Ladies use White Tee. Players 60 years and over use Blue Tee. Long Drive hole to be determined. Ball must be in fairway. Closest to Pin Contest are on all par 3s, Closest-to-the Pin markers are for both Men and Ladies combined!

After play, sign your scorecards and turn them in to a member of the Tournament Committee and/or Siena's tournament staff inside the Golf Shop at the course. **(Tournament Com-**

mittee Members are as follows: Victor Vannukul, Larry Taylor, Howard Wu and Stephen Klotz). All decisions on tournament play will be by Committee and their ruling is final.

Of course, the evening is on your own. **You might try to use Red Rock's Spa access to get some exercise, massage or other spa services. Our group get 20% off all spa services at Red Rock Spa. The daily access to the spa is included with your package fee.**

7:30P Poker Tournament (Tentative) :

We have not confirmed the availability of the poker room at this time. Will advise you of the details later this week.

Tuesday, June 8, 2010—Golf at Siena GC

Breakfast on your own. It will take you approximately 10 minutes from Red Rock Casino to Siena Golf Course. Driving range is open at 6:15A.

Siena's Driving Range will be open at 6:15A.M. Range Shuttle Service Cart will take you to the practice area every 15 minutes.

SHOT GUN start at 7:30 A.M. (Modified back nine SHOTGUN Start). Please check the pairing sheet on page 6 for your exact starting hole. Due to the course layup, some players will start on the difference hole from the previous day (But still in the same order). Please be ready at your cart no later than 7:15A. All Men play from the Black Tee Marker. Ladies use White Tee, Players 60 years and over use Blue Tee. Long Drive hole to be determined. Ball must be in fairway. Closest to Pin Contest are on all par 3s. Closest-to-the Pin markers are for both Men and Ladies combined!

A professional photographer will take your group picture during the round today for the commemorative tournament picture nested in the custom folder complimentary of the ALSRI Golf Club's officers. Your picture will be ready for pick-up at the award banquet (Red Rock—Veranda Room).

Afternoon break and your leisure.

6:30 P.M. Banquet Award Dinner at Red Rock's Veranda Room located on the fifth floor. Open Bar starts at 6P.

Alcoholic Beverage on your own (Cash Bar). Dinner is a buffet style dinner. Awards and Prizes ceremony immediately after dinner.

Wednesday, June 9, 2010—Check Out

Check-out time is 12 P.M. Make sure that you gather all belongings before check-out. Have a safe trip home. See you all next year!!