

# Eagle

Volume 19 Issue 3

11th Annual IRS & Friends West Golf Tournament

June 2013

## Inside This Issue

President's Message	1
Red Rock Casino Info	2-3
Bears Best Las Vegas/TPC Las Vegas Info	4-5
Starting Sheet	6
Tournament Info,	7
Schedule of Events	8
Pace of Play Tips	9
Club Glove Special Offer	10

## ALSRI Members conquered World Golf Village @ LMSB Golf Classic II



## ALSRI PRESIDENT'S MESSAGE

- Cocktail Reception at 6:00P @ Victor's Suite (18th or 19th floor).
- Driving Range is Open at 6:15 A.M. on Monday & Tuesday
- 7:30P A Private Texas Hold'em Poker Tournament on Monday night @ Red Rock Poker Room (Tentative)
- Banquet Dinner @ 6:00P.M. on Tuesday night @ Red Rock's convention area - fifth floor.
- Your \$25 daily resort fee includes an access to the Red Rock's Spa, in room Wi-Fi and daily newspaper. Our guests get 20% off all spa services.



Welcome to the 2013 IRS and Friends West Coast Golf Tournament. This is our 11th year running this exciting annual event. I hope that all participants enjoy the superior accommodations at the Red Rock Resort and Spa and at two of the best courses in Las Vegas – Bear's Best and TPC Las Vegas.

This year is the last year of our contracts with our tournament partners; Red Rock Resort, Bear's Best Las Vegas and TPC's Las Vegas. There is a good chance that a different resort will host our event next year based on our initial conversation with Red Rock that hit a snag since last month. In the meantime, several other resorts and hotels in the Las Vegas area have made a strong effort to get our business for the next three years. Victor is hopeful that our group will sign a contract with a

new hotel in a few months.

In this edition of The Eagle newsletter, you will find information that you need regarding events taking place at the Red Rock Resort and Spa, as well as golf information at Bear's Best and TPC Las Vegas during your stay next week.

On behalf of Victor and the entire ALSRI Golf Club Board, thank you for participating in this year's event and for many years to come! We look forward to seeing you there!

And please drop by to have a cold one with us on Sunday night at Victor's Suite between 6-9P.

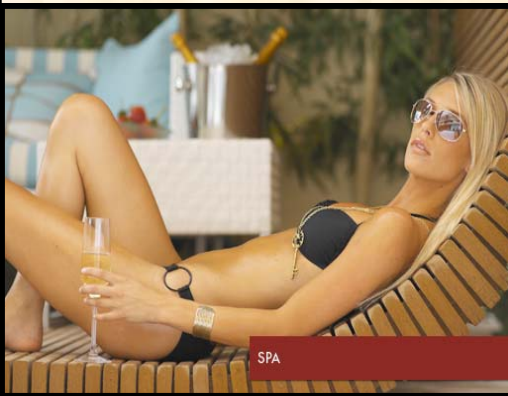
/s/ Stephen Klotz  
Club President ALSRI Golf

**Red Rock Casino, Resort and Spa Information**  
**11011 W. Charleston Blvd., Las Vegas, CA 89134 (702) 797-7777**  
**Www.redrocklasvegas.com**

**Directions:**

From Los Angeles, I-15 to I-215 West for approx 12 miles to Charleston Exit. Hotel is on your right (Please use East Garage when checking-in. It's the closest garage to the hotel lobby). Red Rock is located approx. 10 miles from the Las Vegas Blvd. Both tournament courses are located within 10 minutes of Red Rock Hotel.

From McCarran International Airport, take I-215 West to Charleston Exit. See below Complimentary Shuttle Service info below.

**Red Rock Complimentary Shuttle Service:**

**AIRPORT to RED ROCK** (Picks up from Level Zero (0), down the glass elevators located between north and south baggage claim areas) 8am, 10am, 12pm, 2pm, 4pm, 6pm, 8pm, 9pm. Estimated travelling time is 30 minutes.

**RED ROCK to AIRPORT** (drops off at the departures level) 7am, 9am, 11am, 1pm, 3pm, 5pm, 7pm.

**FASHION SHOW MALL to RED ROCK** (Picks Up at Valet Circle on Fashion Show Drive) 11:40am, 1:40pm, 3:40pm, 5:40pm, 7:40pm, 9:40pm (15 minutes)

**RED ROCK to FASHION SHOW MALL** (departs from Red Rock Valet) 11:10am, 1:10pm, 3:10pm, 5:10pm, 7:10pm,

**Guest Room Amenities:**

- Down Comforter
- Flat screen TV
- Marble accented bathroom
- Free In room WI-FI Service

**Entertainment & Other service:**

- 72 lanes bowling alley
- Kid Zone/Game Area
- 20 screens Regal Theatre
- Great Pool area for adults and kids
- Full Service Spa

**Dining Options:**

- Hachi (Modern Japanese Restaurant)
- T-Bone (Prime Steakhouse)
- Terra Rosa—Fine Italian Restaurant
- Cabo—Mexican Restaurant
- LBS—The Burger Joint
- Grand Café (24 hours coffee shop)
- The Yardhouse (Sport Bar & Micro Brewery) -
- Feast Buffet (Breakfast, Lunch and Dinner)

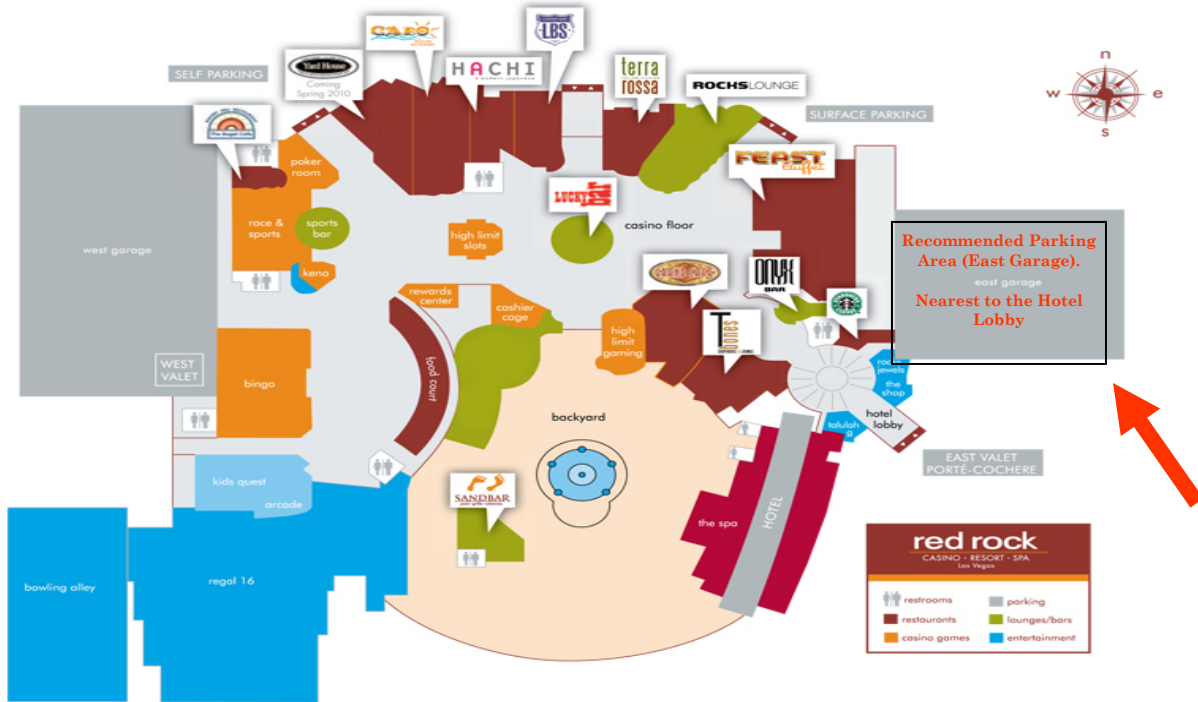


**"4 1/2 stars resort per tripadvisors.com"**

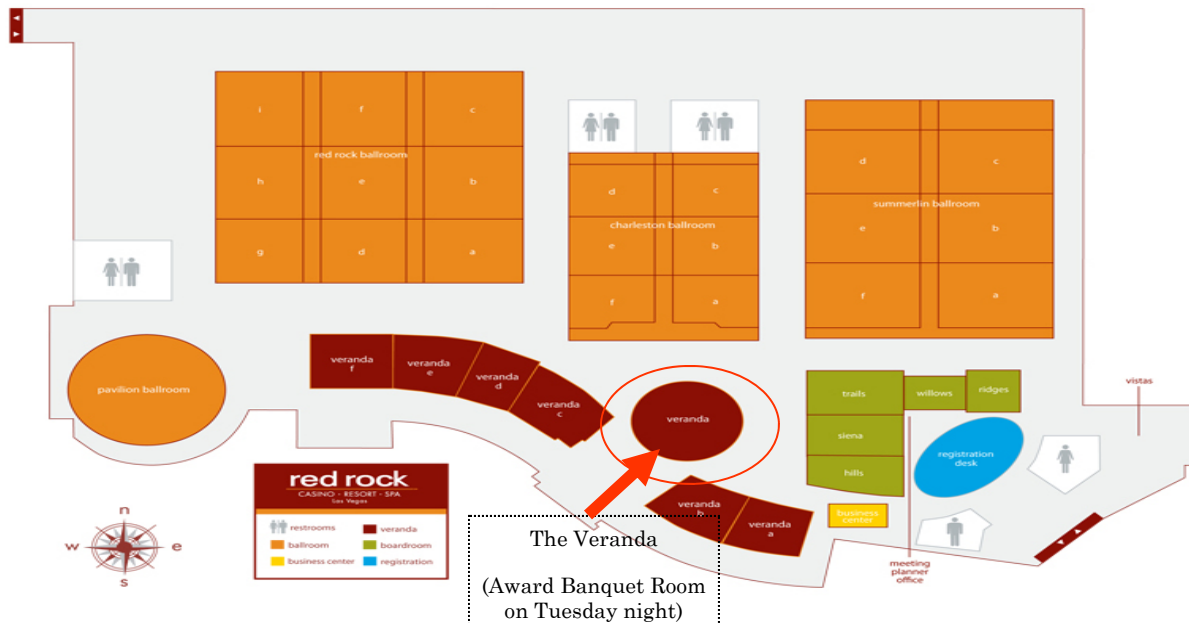


# Red Rock Casino, Resort and Spa Information

## GROUND FLOOR



## 5TH FLOOR Meetings and Events



# Bear's Best Las Vegas

## Bear's Best Las Vegas

11111 W. Flamingo Road,

Las Vegas, NV 89135

702-605-0649

[www.clubcorp.com/clubs/bear-s-best-las-vegas](http://www.clubcorp.com/clubs/bear-s-best-las-vegas)



### Course Details

Tee	Slope	Rating	Yardage
Gold	147	74.0	7194
Blue	130	71.3	6628
White	122	68.3	6043
Red	116	68.7	5043

A Jack Nicklaus golf course like no other, Bear's Best Las Vegas is an upscale, daily fee public Las Vegas golf course offering a world-class private club experience in a public facility focused on corporate entertaining, golf outings, and other private events. To create this masterpiece of a Jack Nicklaus golf course, Jack Nicklaus himself hand selected 18 holes from his more than 200 phenomenal course designs worldwide, encompassing all of his favorites into one extraordinary round of golf. With manicured bent grass greens, challenging and varied hole designs, and immaculate fairway/tee complexes (over seeded in winter to ensure optimal conditions year-round), Bear's Best offers the best conditions in Las Vegas.

# TPC Las Vegas

## TPC Las Vegas

9851 Canyon Run Drive,

Las Vegas, Nevada 89135

702-256-2000

[www.tpc.com/lasvegas](http://www.tpc.com/lasvegas)



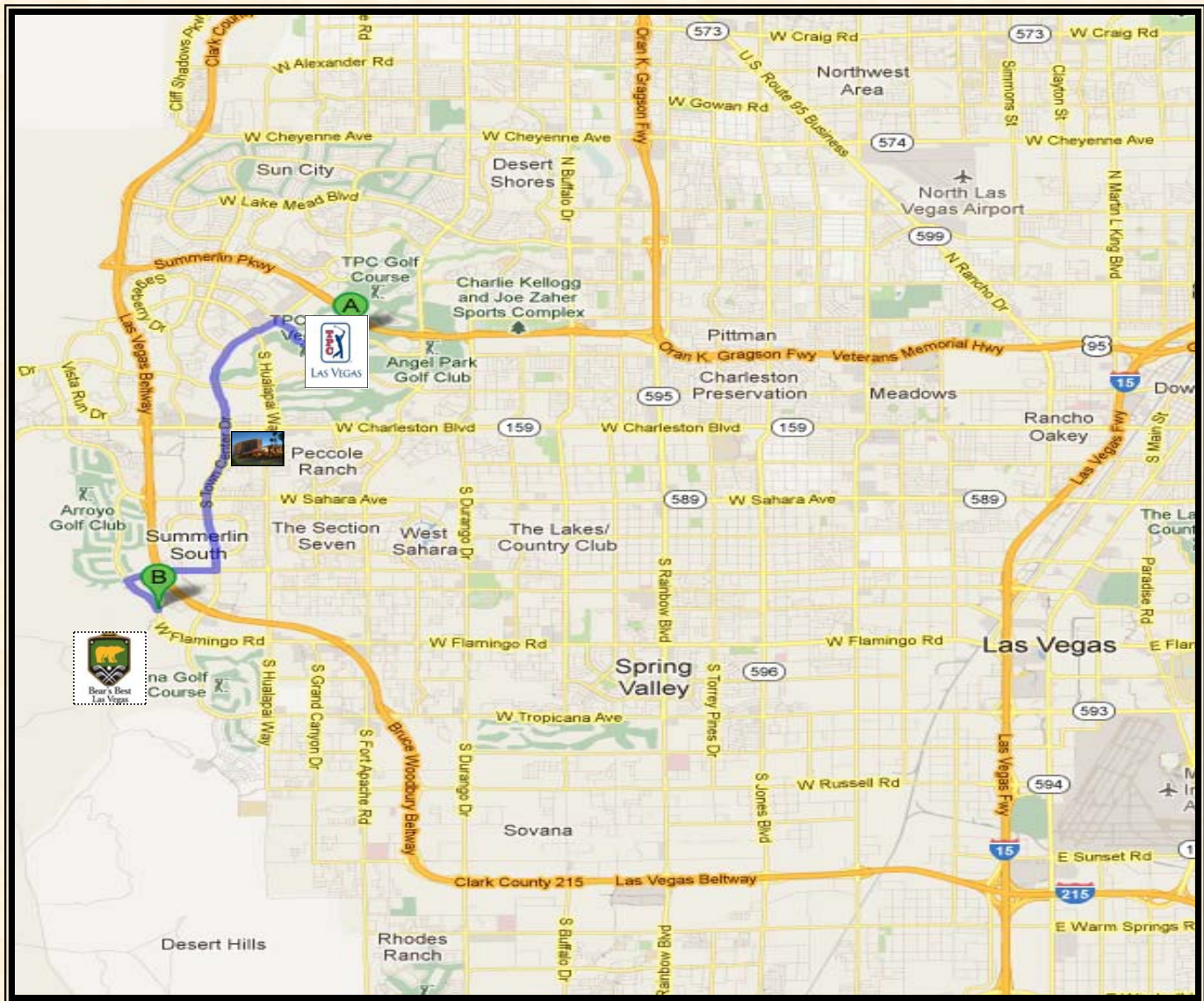
Tees	Par		Rating		Slope		Yardage		
TPC	71		73.4		136		7080		
Blue	71		71.0		128		6769		
White	71		68.1		126		6047		
Red - Ladies	71		67.8		117		4963		
<b>Front</b>	<b>1</b>	<b>2</b>	<b>3</b>	<b>4</b>	<b>5</b>	<b>6</b>	<b>7</b>	<b>8</b>	<b>9</b>
TPC	359	196	466	544	378	604	209	458	349
Blue	349	184	452	518	363	590	195	433	337
White	315	151	364	471	353	551	169	376	308
Men's HDCP	17	5	1	11	15	9	7	3	13
Men's Par	4	3	4	5	4	5	3	4	4
Women's Par	4	3	4	5	4	5	3	4	4
Women's HDCP	15	9	5	3	11	1	17	7	13
Red - Ladies	269	110	323	429	255	439	118	297	248
<b>Back</b>	<b>10</b>	<b>11</b>	<b>12</b>	<b>13</b>	<b>14</b>	<b>15</b>	<b>16</b>	<b>17</b>	<b>18</b>
TPC	419	444	145	439	365	612	202	443	448
Blue	406	428	134	396	356	598	185	424	421
White	367	362	118	364	339	531	160	390	358
Men's HDCP	12	4	18	2	16	6	14	8	10
Men's Par	4	4	3	4	4	5	3	4	4
Women's Par	4	4	3	4	4	5	3	4	4
Women's HDCP	10	6	16	8	12	2	18	4	14
Red - Ladies	279	331	94	297	275	479	103	335	282

Tournament Players Club Las Vegas is "desert elegance" on display. From the stunning backdrop of Red Rock Canyon to the rugged natural landscape, [TPC Las Vegas](http://www.tpc.com/lasvegas) golf course (formerly known as TPC Canyons) offers a test to the most seasoned of golfers. This is the premier PGA TOUR facility in Las Vegas making it a destination for celebrities and PGA TOUR players alike. It's no wonder the golf course has been heralded by Golf Digest as one of the "Best Places to Play."

The Bobby Weed and Raymond Floyd design is a par 71, 7,063-yard golf course that will test your skills while dazzle you with views of the surrounding mountains, canyons and the famed Las Vegas skyline. Your shotmaking ability is put to the test early in your round on the par-3 second hole (appropriately named "Canyon"). You will need to carry your tee shot almost 200 yards from the tips to an island-like green in the middle of the desert..



## Map of Las Vegas: Red Rock Casino, Bear's Best Las Vegas and TPC Las Vegas



### Driving directions to Bear's Best Las Vegas from Red Rock Casino (3.4 Miles, 9 minutes):

1. Head East on W. Charleston Blvd., toward S Pavilion Center Drive,
2. Turn RIGHT onto S Center Drive,
3. Stay left on S Center Drive and turn right onto W Desert Inn Road,
4. Turn left onto W Flamingo Road, Bear's Best GC on the right.

### Driving directions to TPC Las Vegas from Red Rock Casino (3.3 Miles, 8 minutes):

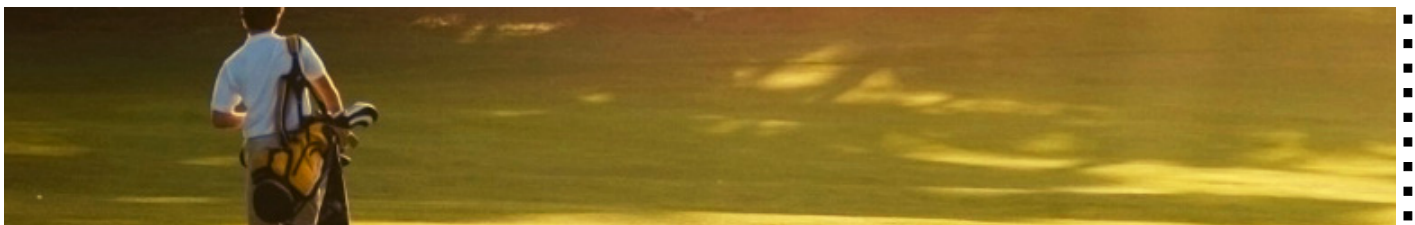
1. Head East on W. Charleston Blvd., toward S Pavilion Center Drive,
2. Turn LEFT onto S Center Drive,
3. At the SECOND traffic circle, take 1st exit on right onto Canyon Run Drive,
4. TPC Las Vegas on right.

**7:30A Modified Back-Nine SHOTGUN Start**  
**(The Assigned Holes Below are Tentative and Subject to Change)**

Bear's Best June 10, 2013	TPC Las Vegas, June 11, 2013	Player1	Player 2	Player 3	Player 4
1A	1A	Jin Yang	Lee Robinnette	Darrell Graham	Tim Wallace
1B	1B	Mark Hilton	Bob Lewis	Kim Lewis	Ron Nestor
18A	18A	Roger Law	Deron Akiyama	Paul Decena	Ron Yookoo
18B	18B	Jon Tamaki	Doug Kunze	Don Kihara	Melvin Louie
17A	17A	George Nichols	Steve Nichols	Victor Vannukul	Frank Wun
17B	17B	Larry Taylor	Ed Chavez	Dennis Murakami	Chuck Wong
16A	16A	Jim Belcher	Steve Miles	David Johns	Richard Wong
16B	16B	Mark Zuverink	Bill Roberts	Glen Fitz	Terrell Taylor
15A	15A	Brent Cook	Rocky Quintana	Leo DeLosSantos	Eddie Villarreal
15B	15B	Tim Forrest	Al Biernesser	Cliff Toyama	Joe Alexander
14A	14A	Richard Tsuchida	David Tsuchida	Gerardo Carranza	Ray Fens
14B	14B	Jeff Shoji	Casey Hashimoto	Scott Schmidt	Gerry Reese
13A	13A	Eugene Murphy	Rich Kraus	Rick Palamara	John Niederst
13B	13B	Tavy Guzman	Bennie Novicki	Mike Yi	James Rhodes
12A	12A	Jim Muratore	Jimmie Muratore	Charles Muratore	George Bertsch
12B	12B	Brenda MacGregor	Doug MacGregor	Debbie Ross	John Sanchez
11A	11A	Jerry Stang	Edd Shoemaker	Steve Klotz	George Murphy
11B	11B	Denise Bergsrud	Bert Bergsrud	John Kelly	Kevin Kelly
10A	10A	Gary Anderson	Rick Sackett	Archie Nakaoka	David Vicente
<b>DOUBLE PAR RULE IN EFFECT!!!</b>					

**Monday, June 10, 2013— 7:30A Shotgun Start at Bear's Best Las Vegas. Tournament Shirt will be distributed before tee-off. Please arrive at the golf course NLT 6:30A. Men & Seniors: Use White Tee, Ladies—Use Red Tee.**

**Tuesday, June 11, 2013— 7:30A Shotgun Start at TPC Las Vegas. Tournament Towel will be distributed before tee-off. Please arrive at the golf course NLT 6:30A. Men : Use Blended Tee, Seniors (> 60 years) : Use White Tee, Ladies—Use Red Tee.**





# Competing Flights & Index (Handicap)

## Index

### IRS Employees & RETIREES Flights:

#### Men (Tentative Spread)

A Flight: 0-13.9  
 B: 14.0 –21.9  
 C: 22 and over

Ladies: Open

#### Men—Friends, Family and Guest Flights:

#### (Tentative Spread)

Use Calloway System. Will split players evenly among three flights

A Flight: 0-14.9  
 B Flight: 15.0 and over

Men: Use Blended Tee—@ TPC  
 White Tee @ Bear's Best

Ladies: Use Red Tee

Seniors (60 years and over) with index over 13.9: Use White Tee at Bear's Best & TPC Las Vegas.

(Tournament Format: Individual Stroke Play (NET) with Index

#### Important contact Info:

Victor's cell: 626-476-2439

Red Rock: 702-797-7777

Bear's Best Las Vegas: 702-605-0649

TPC Las Vegas: 702-256-2000

Email: waves3464@hotmail.com, Or  
 Victor.V.Vannukul@IRS.Gov

## Flights

For the members of IRS L.A. Golf Club, ALSRI Golf Club. We will use your June 2013 index for this event.

#### IRS Employees & Retirees:

For out-of-town IRS employees and Retirees, we hope to have your USGA index before the start of the tournament on Monday. If any of you have an established USGA index, please email them to Victor as soon as possible at either waves3464@hotmail.com or at Victor.V.Vannukul@IRS.Gov or you may give them to Victor, and/or other committee members during the pre-tournament registration on Monday morning. Players without established index, their index will be based on either prior year adjusted scores or index computed under Calloway system.

#### Friends, Family and Guests Golfers:

We will compute all Friends, Family and Guests golfers either by using prior IRSWEST tournament scores or Calloway Handicapping System (First year participants) unless they can demonstrated that they have established USGA index from his/her own club. If any of you have established USGA index, please email them to Victor at either waves3464@hotmail.com or at Victor.V.Vannukul@IRS.Gov or you may give them to Victor, and/or other committee members during the pre-tournament registration on Monday morning.

The tournament committee reserves the right to adjust the index of players who don't have an established USGA index. Your final designated competing flight could be different from the designated flight given to you at the beginning of the tournament.

## Prizes & Awards

### IRS Employees & RETIREES Flights:

#### Men with USGA index:

A, B & C Flight: 1st , 2nd & 3rd place trophy

#### Ladies (EMPLOYEES, RETIREES & GUESTS

#### Combined)

1st Place Trophy

#### Men—Friends, Family and Guests:

A & B Flights: 1st , 2nd & 3rd place trophy

#### Closest to Pin: (All participants):

All par 3s

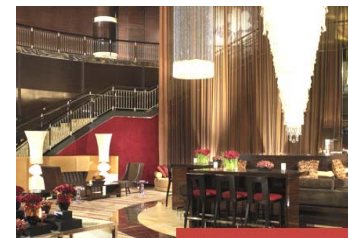
#### Combined Long Drive Contest.

Hole to be determined.

#### Combined Low Gross:

1st Place Employee

1st Place Friends, Guest Family



Above—Red Rock Casino and Resort's  
 Luxury Lobby

# Schedule of Events

## Sunday, June 9, 2013

Check-in at Red Rock Casino, Resort and Spa at your leisure.

### 6:00– 9:00P.M. ALSRI President Welcome Party

ALSRI Golf Club President, Stephen Klotz, will host a reception party at Victor's Suite on the 18th or 19th floor (**Under Victor Vannukul's Name**) from 6:00—9:00P.M. Please come join us for beer, wine, soft drink and delicious appetizers and chance to meet other participants.

**Meals:** Except for banquet dinner on Tuesday night, you are on your own for the four days. There are many restaurants located inside Red Rock including the Grand Café' which open 24 hours and run daily breakfast specials for order place before 6A. You can also find many restaurants on Charleston Avenue.

Please remember to arrange a **wake-up call** for the next day's [golf!](#)

## Monday, June 10, 2013—Bear's Best Las Vegas

Breakfast on your own. It will take you approximately 10 minutes from Red Rock Casino to Bear's Best Las Vegas . Please consult with the driving directions to Bear's Best Las Vegas provided on page 4 of this newsletter in advance.

Bear's Best Las Vegas 's Driving Range will be open at 6:15A.M.

**Please check-in with the ALSRI Golf Club Table for your tournament gift (Bear's Best Las Vegas Premium Nike Golf Shirt). For those that specified their shirt size on their registration form, you will get the exact shirt size you requested. For other, you will get either Large or Extra Large size. No exchange will be allowed this year.**

**SHOT GUN start at 7:15A.M. (Modified back nine SHOTGUN Start).** Please check the pairing sheet on page 6 for your exact starting hole. Please be ready at your cart no later than 7:00A. All Men & Seniors play from the White Tee Marker. Ladies use Red Tee. Long Drive hole to be determined. Ball must be in fairway. Closest to Pin Contest are on all par 3s, Closest-to-the Pin markers are for both Men and Ladies combined!

After play, sign your scorecards and turn them in to a member of the Tournament Committee and/or Bear's Best Las Vegas 's tournament staff inside the Golf Shop at the course. **(Tournament Committee Members are as follows: Victor Vannukul, Larry Taylor and Mike Yi).** All decisions on tournament play will be by Committee and their ruling is final.

Of course, the evening is on your own. **You might try to use Red Rock's Spa access to get some exercise, massage or**

**other spa services. Our group get 20% off all spa services at Red Rock Spa. The daily access to the spa is included with your package fee.**

### 7:30P Poker Tournament (Tentative) :

**We have not confirmed the availability of the poker room at this time. Will advise you of the details later this week. If you are interested in playing this event, please check with Victor Vannukul.**

## Tuesday, June 11, 2013—Golf at TPC Las Vegas

Breakfast on your own. It will take you approximately 10 minutes from Red Rock Casino to TPC Las Vegas. Driving range is open at 6:15A.

TPC Las Vegas's Driving Range will be open at 6:15A.M.

**Please check-in with the ALSRI Golf Club Table for your second tournament gift (Club Glove's Premium Cart Towel with ALSRI LOGO).**

**SHOT GUN start at 7:15 A.M. (Modified back nine SHOT-GUN Start).** Please check the pairing sheet on page 6 for your exact starting hole . Please be ready at your cart no later than 7:00A. All Men play from the Blended Tee Marker. Ladies use Red Tee, Players 60 years and over use White Tee. Long Drive hole to be determined. Ball must be in fairway. Closest to Pin Contest are on all par 3s. Closest-to-the Pin markers are for both Men and Ladies combined!

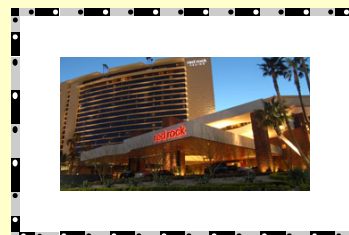
Afternoon break and your leisure.

**6:30 P.M. Banquet Award Dinner at Red Rock's Veranda Room located on the fifth floor. Open Bar starts at 6P.**

Alcoholic Beverage on your own (Cash Bar). Dinner is a buffet style dinner. Awards and Prizes ceremony immediately after dinner.

## Wednesday, June 12, 2013—Check Out

Check-out time is 12 P.M. Make sure that you gather all belongings before check-out. Have a safe trip home. See you all next year!!





## Pace of Play — Let's Finish Our Round in 5 Hours or Less

The most common problems in golf identified by the USGA and other local golf associations is the "Slow Pace of Play." The common desirable pace of play for a round of golf is 4 1/2 hours. Since our tournament will be held in Las Vegas during the summer where the daytime high temperature next week is expected to be in the low 100s. However, since our group starts our round quite early during the day, we hope that all our groups would finish their round by 12:30P at the latest which give us 5 hours to complete our round each day. Below is the excerpt from the USGA regarding the pace of play. Let's embrace [these rules and make your round and other players behind you more enjoyable.](#)

### Pace of Play Policy

Rule 6-7 states, in part: "The player shall play without undue delay and in accordance with any pace of play guidelines which may be laid down by the Committee," and thereafter prescribes penalties for slow play. In order to prevent any such penalty we suggest that you review carefully the following guidelines.

### Definition of "Out of Position"

The first group(s) to start will be considered out of position if, at any time during the round, the group is behind the prescribed schedule as detailed on the attached Pace of Play Time Chart.



Any following group will be considered out of position if it (a) is taking more than the allotted time to play **and** (b) reaches the teeing ground of a par-3 hole and the preceding group has cleared the next tee; reaches the teeing ground of a par-4 hole **and** the putting green is clear; **or** reaches the teeing ground of a par-5 hole when the preceding group is on the putting green. Both (a) and (b) must apply for a group to be out of position.



### Ten Ways to Improve Pace of Play at IRSWEST event in Vegas

1. **Move promptly:** Proceed quickly to your ball and be ready when it's your turn to hit.
2. **Play promptly:** Take 30 seconds, maximum, to hit your shot.
3. **Be quicker on the greens:** Read it. Hit it. Tap it in. Go to the next tee. Read your putt while others are putting.
4. **Treat the rules with discretion:** Take no more than 3 minutes to look for balls and take relief. Play provisional balls when you can not see your ball after hitting.
5. **Do your housekeeping on your own time:** Start the round with tees, markers, balls and a ball-mark repair tool in your pocket. Replace headcovers while you walk. Write down scores on the next tee. Don't make others wait.
6. **Be cart smart:** Drop off your partner and drive to your ball. When you leave the cart, take three clubs, not one. Park behind greens.
7. **Be a good teammate:** Know your playing partners' strengths and weaknesses; help them when it's convenient, move on when it's not.
9. **Demand accountability from the course you play:** Ask them to keep up with the group in front of them and, most importantly, **KEEP UP WITH THE GROUP IN FRONT OF YOU!!!**
10. **Accept responsibility:** Recognize that slow play isn't just the other guy's fault.
11. **Drink plenty of fluids to keep you hydrated!! - Double Par Rule is in Effect.. Use it!!!**



# Special Deal on Deluxe Golf Travel Bag From Club Glove Company

The Club Glove Company, the manufacturer of the most trusted travel golf bags among the PGA members where their products are seen on golf courses worldwide has offered to sell their most popular golf travel bags (Last Bags XL, Last Bag and Burst Proof II) directly to members and Guests of ALSRI GOLF CLUB at 40% discount over their suggested retail price. These bags are light weight, strong, ready to fly and come with limited lifetime warranty. ALSRI Golf Club has negotiated the exclusive deal where ALSRI Logo will be embroiled directly to the bag of your choice along with your name for an additional \$12. These bags come in 16 colors. The discounted price include a free shipping cost to your home. CA State Sales Tax is applicable for all order from California Residents. If you are interested in ordering one of these bags, please call Chad Welton of Club Glove at 714-843-9288 and let him know that you're part of ALSRI GOLF CLUB to get his special deal. For more info of the bag, go to [www.clubglove.com](http://www.clubglove.com).

<b>Name:</b>				<b>City:</b>	<b>State/Zip:</b>
<b>Address:</b>					
<b>Type of Bag</b>	Last Bag XL: \$229 (SRP \$329)	Last Bag: \$169(SRP \$299)	Burst Proof II: \$119 (SRP \$219)	Cost of Bag \$ _____	
<b>Custom Embroidery(\$12):</b>	ALSRI LOGO or Choose Your Own Logo (Additional Logo Set Up Charge)		<b>Name:</b>	\$ <u>12</u>	
<b>Ship to:</b>	Address:				
<b>Color (Circle One):</b>					
<b>8.75% Sales Tax (CA Residents Only)</b>					\$ _____
<b>Total</b>					\$ _____

### Golf's Best Travel Bags

integrates with *TRAIN REACTION*

**A. Last Bag<sup>®</sup> XL**  
54" H x 22" W x 19" D • 95 linear inches  
TBLX #329 available in 16 colors (below)

**B. Last Bag<sup>®</sup>**  
#1 travel bag on the PGA Tour  
51" H x 19" W x 16" D • 86 linear inches  
TBLB #299 available in 16 colors (below)

XL Large collapsible bag (11.2 lbs)  
Large collapsible bag (10.6 lbs)  
These premium travel bags accommodate nearly any golf bag and up to a 47" driver plus room for gear/luggage. 2 exterior shoe/storage pockets and includes set of lightweight zippered nylon shoe bags. XL is for extremely large tour bags. Made in USA. Limited lifetime warranty.  
\* 5-year NGA warranty available

**C. Stiff Arm<sup>®</sup>**  
club protector  
SASR1000 #2699

Eliminates nearly all risk of club breakage (U.S. Patent #5,738,208). (1.2 lbs) fully adjustable. 3-piece telescoping crutch fits all travel bags and adjusts to slightly longer than the longest club in the bag to protect clubs.

## 90% Of All Tour Players Use These Bags

\*Based on 2007 Darrell Survey results

**Club Glove<sup>®</sup> Golf Travel Bags**  
The #1 travel bag on Tour

- Single piece burst proof construction made with Invisia™ CORDURA® brand 1000 d water resistant nylon fabric up to 3x stronger and lasts up to 6x longer than standard polyester. 1600 d ballistic nylon base reinforcement
- Reliable and durable YKK® zippers and IIW Nexus® Buckles
- Patented high-impact plastic wheelbase with integrated support and in-line skate wheels and bearings for smooth and quiet transport (U.S. Patent D511, 043 S)
- Over the top zipper for easy loading
- Patented pending integrated carry handle integrates with Train Reaction™ (Patent Pending Ser# 12/348,857)
- Patented adjustable restraint device to secure golf club set (U.S. Patents #7,219,902; #7,188,714 and #6,901,975)
- ID card holder

**D. Burst Proof w/Wheels II**  
#1 travel bag in collegiate golf  
51" H x 15" W x 14" D • 80 linear inches  
TBBW2 #219 available in 16 colors (below)

Premium fitted collapsible bag (8.0 lbs) is perfectly fitted for most stand bags and built with the same high quality features as the Last Bag. Shoe pockets strategically located inside the bag. Made in USA. Limited lifetime warranty.  
\* 5-year NGA warranty available

**PRO grade**

**TR5**  
TRUCK READY SYSTEM

**5x**  
STRONGER

**3x**  
STRONGER

Express yourself in 16 standard colors!

**BUY AMERICAN**  
**MADE IN USA**

**CORDURA** brand

Used by more Touring professionals than any other product in golf 800.736.4568

CLUBGLOVE.COM USA