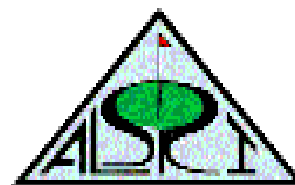




Eagle



Volume 9 Issue 3

June 2003

Welcome to the first "IRS & Friends West-coast Golf Tournament" @ Primm Valley Resort

.....Stephen Klotz, ALSRI President

INSIDE THIS ISSUE

<i>President Message</i>	1
<i>Schedule of Events</i>	1, 7
<i>Primm Valley Resort & Casino Information</i>	2
<i>Primm Valley Golf Course Information</i>	3
<i>Starting Sheet & Pairings</i>	4-5
<i>Flights Info, Awards & Trophy</i>	6
<i>Survivors Cup Second Round Results</i>	8
<i>You know you're a Bad Golfers if...</i>	9
<i>Golfnut</i>	9
<i>Rancho Park Tournament Registration</i>	10

The **ALSRI Golf Club** (otherwise known as the Los Angeles Area IRS Golf Club) is proud to be the host for this tournament. The board has been working diligently to ensure that you enjoy your time here in the Primm and Las Vegas, Nevada areas.

Our golf club, founded in 1991, puts on bi-monthly tournaments throughout the Southern California area. A couple of years ago we started talking about putting on a tournament that would expand to IRS golfers and their friends beyond Southern California. We sent our emissary, Victor Vannukul, to the IRS Golf Tournament in Myrtle Beach, South Carolina to network and get information from the board involved in putting on that event that has been going on for over 25 years.

The result is the first-ever IRS and Friends West Coast Golf Tournament. Throughout this newsletter you will find information you will need when you arrive in Nevada, as well as

information you will need regarding the tournament.

We hope you enjoy your time in the Primm and Las Vegas, Nevada areas and will return to play with us next year.

I would also like to extend a special thanks to Victor Vannukul, tournament director, for all of his time and dedication in putting on this tournament and to Ron Nestor from the IRS Myrtle Beach tournament, for his assistance, support and encouragement for this endeavor.



Schedule of Events

...Al Valentine, PGA and Victor Vannukul

Thursday, June 26th, 2003

Arrive at the Primm Resort and Casino at your leisure. Room Check-in is done on an individual basis in the Primm Valley Resort, anytime after 3:00pm.

Short Game Clinic at 4:30P.M. (By Al Valentine, PGA)

Our sponsor and co-coordinator, Al Valentine, PGA will conduct a private Short Game Clinic at the Short Game area located just West of the Pro Shop at Primm Golf Club and all who would like to

attend the educational session are invited to join us! Bring your golf clubs and be ready to hit some golf shots and we will do our best to find answers to some of those golf "problems". It is highly recommend that you leave your clubs for overnight storage at the course. Primm's professional staff would be able to pre-load your golf bag on the golf cart in according to the designated starting hole listed on the starting sheet s (Page 4-5). For those that arrive late, please look for your cart and the designated area on the morning of the tournament day.

(Continued on page 6)

Special points of interest:

- Free Short Game Clinic at 4:30P.M. (At Primm's Short Game Area) conducts by Al Valentine, PGA.
- 8:00 A.M. SHORT GUN Start on the Desert Course on Friday.
- 8 A.M. SHORT GUN Start on the Lakes Course on Saturday.
- 6 P.M. Award Buffet Dinner & Ceremony at Pristine Room after Saturday golf.

Primm Valley Resort & Casino Information

General Information and direction from Las Vegas McCarran Airport:

Primm Valley Resort & Casino is one of three casino resorts located at the Nevada-California border. The other resorts are Buffalo Bills & Whiskey Pete's. All three resort are owned and operated by the MGM Mirage Group. [Primm Valley Resort complex is located approximately 40 miles south of Las Vegas McCarran International Airport on Nevada-California Highway 15. By car, it takes approximately 35 minutes from Las Vegas strip to three resorts.](#) Whether you're history buff or a gangster guru, you won't want to miss Primm's Bonnie & Clyde Collections. Get up close and personal with the



infamous couple as you explore their getaway car and more notorious memorabilia including the bullet-riddle shirt Clyde died in. You'll also even get a glimpse of the restored Dutch Schultz-Al Capone gangster car. This intriguing display is located at the hallway adjacent to the Resort's Main Cashier Cage. The other side of the display is the resort exclusive indoor Fashion Outlet stores where over 100 designer stores await you for your loved ones for some serious shopping. This fabulous Fashion Outlets stores include such world-class designers such as Last Call from Neiman-Marcus, Off Sax Fifth Avenue, Calvin Klein, Donna Karan Company Store, Tommy Hilfiger, Nautica, William-Sonoma, Jhane Barnes, Reebok.. Etc.

Restaurants & Fine Dining at the resorts:

From Monday-Friday, Primm Valley Resort provides [complimentary continental breakfast to all the guests of the resort from 7-10 A.M.](#) at the resort's the Green

Buffet room. You will need to show your room key to receive this complimentary meal.



Primm's Gallery Café Coffee Shop located next to the hotel lobby is open 24 hours a day serving all American breakfast, lunch and dinner. For breakfast, you can dine **Ron Nestor's favorite, Steak & Eggs breakfast deal for merely \$3.99 or choose Victor's quick 99 cents "Jackpot Special Breakfast"**. For lunch, we recommend you to take a free tram from Primm Valley to Buffalo Bill's and enjoy many fast-food restaurant such as Panda Express (Chinese), La Salsa (Mexican) and McDonald. You can also want to try Primm's lunch buffet but most of us would prefer to save room for a better dinner buffet feast at many mega-resorts in Las Vegas.

If you're planning to stay at the resort for dinner, the best restaurant at the three resorts is **'Silver Spur Steakhouse'** located at Whiskey Pete's Resort where you can choose reasonable price entrees from delicious Prime rib, USDA Prime grade steak dinner or seafood fares and pasta dishes. Victor, however, would recommend you to go to Las Vegas for dinner & show. MGM Buffet is one of Victor's favorite place for dinner (\$17.99 per person). You can also try the award-winning Friday seafood buffet at Paris-Paris Casino (\$23.95 per person) or indulge yourself at Rio's famous international dinner buffet (\$12.99) where over 500 dishes from all regions of the world are served daily. After or before dinner, you might try many family-oriented show such as Circus De Solei at the Treasure Island Resort (\$91.50 per person) or Sigfield & Roy Circus Show at the Mirage Resort (\$95 per person). The Canadian diva, Celine Dion, performs nightly at Caesars Palace Hotel (7:30P & 10:30P show). Celine Dion's ticket starts at \$75. If you're interested in seeing Celine Dion, you should call Caesars Palace Box Office in advance. Another great Vegas

Show is "Mama Mia" at the Mandalay Bay Hotel. Mama Mia features songs from the Scandinavian band, ABBA.

Family Entertainment: Try "Desperado" roller coaster at Buffalo Bills. Desperado is one of the tallest and fastest roller coaster in America, at the max speed of 90 MPH. You can also opt for Buffalo Bill's other adventures-like the gravity defying Turbo Drop, Maxflight 2002 Virtual Roller coaster, a thrilling new 3-D ride experience and the wet and wild Adventure Canyon Log Flame.

Casino & Other gaming area: Don't be surprise to see Ron Nestor @one of Primm Resort's 33 table games feature favorite gambling games such as Black Jack, Pai Gow Poker, Let it Ride, Caribbean Stud Poker, Mini-Baccarat..Etc You can also try your luck at one Primm 's slot -machine. Victor's favorite game is CRAP where he's regularly known for making 10-15 run as a shooter (Of Dices) , make some money and gave it all away at the Black Jack table or just enough to pay his golf wages.



I hope we have provided some basic information about the resort. For additional information about the resort or nearby attractions, please page Victor at 800-381-6813 or email him at waves3464@aol.com. Other latest updates and information will be posted at our club website at www.alsri.com. We hope you and your family enjoy your visit at Primm.

Primm Valley Golf Courses

Designed by the renowned golf architect, Tim Fazio, the course at Primm Valley Golf Club have claimed Golf Magazine's Top 100 Course You can Play in North America and Golf Digest's Four-and-a-half Star Award for 2001. From the generous rolling fairways and sparkling water accents of the Lakes Course to the stunning beauty, narrow fairways and challenging natural terrain of the Desert Course, a great golf game is just a swing away.

It's summer time in the Desert, folks! Please drink plenty of liquid during the round to avoid dehydration. Average Las Vegas day time temperature in June is 76/98

Primm Valley Golf Courses are located 4 1/2 miles South of the Resorts Complex off Highway 15 at Yates Well Road. You can reach the golf course by private car or arrange a pick up [in advance](#) via the resort Complimentary Shuttle Service.

On Thursday, [you can drop your golf bag for the overnight storage at the course](#) instead of hauling it back to your room. The course can store your club until after your final round on Saturday.

The course will provide you with the divot tool, tees, logo bag tag and yardage guide before you tee off on each round. Unlimited Range balls are complimentary on the tournament days. Primm Valley has one of the best all grass practice facilities in U.S. with end-to-end hitting area that can accommodate up to 80 persons at the time. Separate short games area (Including sand traps) are available to knock rusts off your game before tee off.

During the round, you can purchase your favorite beverages and spirits at one of the beverage carts or stop by at the clubhouse during the round. The resort will provide you with one bottle water per person with refill stations located through out the courses. Keep in mind that June is the beginning of the summer season in Vegas. Please drink plenty of liquid to avoid dehydration. Each players should bring a bottle of strong sun block and lip balm.

Golf course Information:

Lakes Course:

Hole #	Blue	Green	Par	Hcp.
1	402	300	4	9
2	508	408	5	5
3	386	290	4	13
4	346	325	4	17
5	337	260	4	15
6	166	118	3	11
7	540	424	5	3
8	430	370	4	1
9	<u>182</u>	<u>134</u>	<u>3</u>	<u>7</u>
Out	3297	2629		
10	318	247	4	18
11	509	413	5	6
12	218	119	3	8
13	414	289	4	2
14	317	262	4	14
15	403	311	4	10
16	373	267	12	4
17	157	96	3	16
18	<u>438</u>	<u>386</u>	<u>4</u>	<u>4</u>
In	3147	2390		
Total	6444	5019		



Steve Klotz, ALSRI President ,with local Vegas golf shark, Vern Miller.

Desert Course:

Hole #	Blue	Green	Par	Hcp.
1	407	340	4	11
2	414	321	4	1
3	324	272	4	15
4	160	129	3	17
5	345	306	4	13
6	336	294	4	5
7	506	409	5	7
8	545	422	5	3
9	<u>181</u>	<u>127</u>	<u>3</u>	<u>9</u>
Out	3218	2620		
10	432	363	4	2
11	185	143	3	16
12	409	353	4	6
13	368	291	4	14
14	368	291	4	14
15	170	128	3	8
16	406	336	4	10
17	340	284	4	18
18	492	416	5	12
In	3322	2777		
Total	6540	5397		



First tee on the Desert course (Taken in February 2003) From left to right; Bill Fetner, Ed Pawasarat, Victor Van-nukul, and Ron Nestor.

Primm's IRS & Friends Golf tournament starting sheet
8:00A SHOTGUN Start
Friday, June 27, 2003 - Desert Course
Saturday, June 28, 2003 - Lake Course

<u>Fri</u> <u>6/27</u> <u>Desert</u>	<u>Sat</u> <u>6/28</u> <u>Lakes</u>	<u>Name</u>	<u>Employee</u> <u>Flight</u>	<u>Friends & Guest</u> <u>Flight</u>	<u>Home Town</u>	<u>Home State</u>
1A	1A	Larry Taylor	A		Los Angeles	California
		Jim Mack (R)	C		Los Angeles	California
		George Murphy	C		Fontana	California
		Howard Wu	A		Pasadena	California
1B	1B	Steve Klotz	B		Rancho Cucamonga	California
		William Gray		C	Irmo	S. Carolina
		Ron Nestor	B		Irmo	S. Carolina
		Todd Nestor		B	Irmo	S. Carolina
18A	18A	Tavy Guzman		B	Montebello	California
		"Sweet" Lou Pacho	B		Fairfax	Virginia
		Robert Steimel		B	Highpoint	N. Carolina
		Ann Steimel		L	Highpoint	N. Carolina
18B	18B	Alex Wong		B	Montebello	California
		Chuck Wong	C		Montebello	California
		Dan Hoshi	C		Diamond Bar	California
		Jerry Chang	B		Walnut	California
17A	17A	Chris Behan	A		Elyria	Ohio
		Patrick Behan		B	Chesapeake	Virginia
		Keith Pluto	A		Cleveland	Ohio
		Jeff Davey		B	Fallbrook	California
17B	16A	John Tamaki	A		Belmont	California
		Paul Decena	A		Belmont	California
		Archie Nakaoka	C		San Dimas	California
		Bill Kim	B		Santa Ana	California
16A	16B	Maggie Tse		L	Highland	Michigan
		Stephen Tse		B	Roseville	California
		Michael So		B	Highland	Michigan
		Marina Milton	L		Alexandria	Virginia
16B	15A	Steve Nichols		A	Arcadia	California
		Kathy Nichols		L	Arcadia	California
		George Nichols		A	Arcadia	California
		Chuck Fullington		B	Arcadia	California
15A	15B	Tim Forrest	B		Duarte	California
		Lou Barron (R)	B		Anaheim Hills	California
		Bob Henderson	C		Pasadena	California
		Frank Wun	A		Corona	California
14A	14A	Mike Morikawa	B		Aliso Viejo	California
		Brian Shimizu		B	Corona	California
		Guy Matsubara		B	Torrance	California
		Victor Vannukul	A		Hacienda Heights	California
14B	14B	Rich G Brawley	C		Arcadia	California
		Tony Chen		B	Monrovia	California
		Yeh-Chiao Hung		L	Arcadia	California
		Open				

Primm's IRS & Friends Golf tournament starting sheet

8:00A SHOTGUN Start

Friday, June 27, 2003 - Desert Course

Saturday, June 28, 2003 - Lake Course

<u>Fri</u> <u>6/27</u> <u>Desert</u>	<u>Sat</u> <u>6/28</u> <u>Lakes</u>	<u>Name</u>	<u>Employee</u> <u>Flight</u>	<u>Friends & Guest</u> <u>Flight</u>	<u>Home Town</u>	<u>Home State</u>
13A	13A	Jim Nelson John Nelson Jim Judd Debra Bennett	A C L	 A	Newberry Park Newberry Park Lakewood Los Angeles	California California California California
13B	13B	Rick Sackett Bernie Spaulding Gary Anderson Robert Lujan	A A A	 B	Glendora Glendora Las Vegas Sandy	California California Nevada Utah
12A	12A	Bill Fetner Ed Pawasarat Richard Pawasarat Al Marek	A B B	 B B	Temple City Temple City Temple City Sun City	California California California Arizona
12B	11A	Scott Davey Douglas Davey Sal Di Pasquale Sal Di Pasquale (Partner)	 C	B B B	Fallbrook Escondido Sylmar Sylmar	California California California California
11A	11B	Jill Ouellette Joe Ouellette Al Valentine Jill Valentine	 L	L C PGA Professional L	Fallbrook Fallbrook San Diego San Diego	California California California California
10A	10A	Jerry Stang Bob Campagnone Steve Kargauer Ed Shoemaker	C A C C		Franklin Annandale Baltimore Burke	Tennessee Virginia Maryland Virginia
10B	10B	Denise Bergsrud Bert Bergsrud Norman Light Marc Martin	L A C	 A	Burbank Burbank Fresno Fresno	California California California California
9A	9A	Eugene Murphy Greg Edgar (R) Richard Kraus Richard Palamara	C C B C		Pittsburgh Pittsburgh Pittsburgh Pittsburgh	Pennsylvania Pennsylvania Pennsylvania Pennsylvania
8A	8A	Dan Whalin Gary Chapman William Eastwood Joe Scutti		B B B B	Greensboro Greensboro Greensboro Greensboro	N. Carolina N. Carolina N. Carolina N. Carolina
8B	8B	Richard Mort Open William LeMay (R) Harry Anderson (R)	B C A		Pittsburgh Woodbridge Fairview	Pennsylvania Virginia Virginia

**SHOT GUN START: Double Group on every holes except par 3s where only One group will be tee off
Be ready in your golf cart by 7:45A. Men use BLUE Tee, Ladies use GREEN Tee.**

Green letter—Employee & Retirees, Burgundy letter—Friends, Family and Guests

Competing Flights & Index (Handicap) Of Primm' participants

Index Flights

IRS Employees & RETIREES Flights:

Men with Index:

Use June 2003 SCGA/USGA Index: (Tentative Spread)

A Flight: 0-14.0
B: 14.1– 20.7
C: 21.8 and above

Men without established USGA Index: (Tentative Spread)

Use Calloway System

A Flight: 0-15.0
B: 15.1– 21.5
C: 21.6 and above

Ladies: Open

Men—Friends, Family and Guest Flights: (Tentative Spread)

Use Calloway System

A Flight: 0 - 16.5
B 17.6 - 22.5
C 22.6 and above

Ladies: Open (2 flights at even number of players)

Men: Use **BLUE** Tee
Ladies: Use **Green** Tee

(The committee reserves the right to adjust the breakdown of the all the flights in order to even the field and ensuring that everyone have a good chance at winning the trophies and prizes).

Tournament Format:

Individual Stroke Play (NET) with Index

Important phone number:

Victor's cell: 626-786-2356
(Emergency Only)
Email: waves3464@aol.com
Or victor.v.vannukul@irs.gov

Primm Resort: 1-800-FUNSTOP
Primm Golf Course: 702-679-5510

Participants Info

This is our first year of organizing this event. And we would like to for any mistakes on your index and flights. If you notice any mistakes, please contact Victor immediately. For the members of IRS L.A. Golf Club, ALSRI Golf Club. We will use your June 2003 index for this event.

IRS Employees & Retirees:

For out-of-town IRS employees and Retirees, we hope to have your USGA index before the start of the tournament on Friday. If any of you have established USGA index, please email them to Victor as soon as possible at either waves3464@aol.com or at victor.v.vannukul@irs.gov or you may give them to Victor, and/or other committee members such as Al Valentine during the short game clinic on Thursday.

Friends, Family and Guests Golfers:

We will compute all Friends, Family and Guests golfers using Calloway Handicapping System unless they can demonstrated that they have established USGA index from his/her own club. If any of you have established USGA index, please email them to Victor as soon as possible at either waves3464@aol.com or at victor.v.vannukul@irs.gov or you may give them to Victor, and/or other committee members such as Al Valentine during the short game clinic on Thursday.

The tournament committee reserves the rights to adjust the index of players who don't have established USGA index. Your final designated competing flight could be different from the designated flight given to you at the beginning of the tournament.

Any disputes must be submitted to the committee members after each round.

ALSRI Golf Club also would like to thanks Al Valentine, PGA of Fallbrook G.C. for sponsoring this event. Special thanks to Tom Delaney, PGA, Mike Germany, PGA and Howard Robbins, PGA of Primm Valley G.C. for their utmost professionalism and cooperation. Many thanks to Ron Nestor, Steve Klotz, Larry Taylor and other committee members for their continuous support and advice. Kudo to Mark Watanabe of Monterey Park Golf Shop for his tireless effort in getting our logo golf balls ready on time @ cost. See you all on Friday morning!!!!

Prizes & Awards

IRS Employees & RETIREES Flights:

Men with USGA index:

A, B & C Flight: 1st, 2nd, and
3rd place trophy

Men without USGA Index

(Calloway System)

A, B & C Flight: 1st, 2nd, and
3rd place trophy

Ladies (EMPLOYEES, RETIREES &

GUESTS Combined)

A & B Flight: 1st, 2nd, and
3rd place trophy

Men—Friends, Family and Guests:

A, B & C Flights: 1st, 2nd and
3rd place trophy

Other prizes:

Long Drive:

- # 8 Desert Course (Friday) Men & Ladies
- # 3 Lakes Course (Saturday) Men & Ladies

Closest to Pin: (All participants):

- # 3 And # 15 Desert Course (Friday)
- # 6 And # 17 Lakes Course (Saturday)

Combined Low Gross:

- 1st Place Employee
- 1st Place Friends, Guest & family
- 1st Place Ladies

In addition to the trophy, all first place winners will receive a box of "IRS & Friends Golf Tournament " Logo Golf Balls.

Schedule of Events

(Continued from page 1)

Meals: Except for banquet dinner on Saturday night, you are on your own for the four days. Coffee shops at all the Primm Hotels are 24 hours. Some very nice restaurants are located both at Primm Valley Resort & Casino Hotel as well as Whiskey Pete's and Buffalo Bills. One of my favorites is the Silver Spur at Whiskey Pete's. Reservations are suggested for Friday & Saturday Night s (After the clinic) when a number of us undoubtedly will be there! Advance reservations can be made by calling 1-800-FUN STOP and asking for the Silver Spur Steak House, after 5 P.M. and seven days in advance. Evening Entertainment can be found at Primm if you look really hard...just kidding...Have fun and remember to have a **wake-up call** for the next day's golf!

Friday, June 27th, 2003

Breakfast on your own. Primm's coffee shop is open 24 hours a day but service is usually slow in the morning so get there early. McDonald's is located outside the hotel. Starbuck' Coffee has a store inside the convenience center adjacent to Chevron station next to the Freeway. Primm Resort is providing complimentary continental breakfast for all guests at the Greens Buffet between 7-10 A.M. Monday thru Friday only. It might be a little late for the golfers (8AM SHORT GUN Start) but non golfing family members should take advantage of the opportunity.

Primm's Driving Range will be open at 6:30A.M.

SHORT GUN start at 8:00 A.M. Please be ready at your cart no later than 7:45A.M. **Play on the Desert Course** today will be from the Blue Tee Marker. Ladies use Green Tee. Long Drive hole is #8 (Men & Ladies). Ball must be in fairway. Closest to Pin Contest are on Hole # 3 and # 15, Closest-to-the Pin markers are for both Men and Ladies combined! We will NOT be playing the local rule of any ball hit into grassy areas around course should be played as a lateral hazard. If you cannot see if your ball is in play off the tee or at any other time, you are required to play a provisional ball (Even if you might be in a water hazard!). We do this so as to speed up play! Even though the USGA rule does not permit this, WE WILL for this event! You may still take your other options if you are in a water hazard). **Play the ball as it lies and putt everything out...**

For those of you who have not played the Desert Course, a word of advice that will help is that this is a "**Position**" golf course...consider playing the course just a bit conservatively. After play, sign your scorecards and turn them in to a member of the Tournament Committee and/or Primm's tournament staff inside the Bar area of the Golf Shop at the course. (Tournament Committee Members are as follows: Al Valentine, PGA, Victor Vannukul, Larry Taylor, Howard Wu and Steven Klotz). All decisions on tournament play will be by Committee and their ruling is final.

Of course, the evening is on your own. Go to the City...stay at the Primm casinos...take in a show...heck, you can go bowling! What to do, what to do....

Saturday, June 28th, 2003

Breakfast on your own.

Primm's Driving Range will be open at 6:30A.M.

SHORT GUN start at 8:00 A.M. **We will play on the Lakes Course.** Men plays from the Blue Tee, Ladies from Green Tee. This golf course too, plays fast...the ball will run. More open than its' sister course, let it all hang out off the tee here. Get it close on the greens, though...these babies are huge. (And usually quick!) Another word of advice for both courses...everything has a tendency to break and be faster toward the freeway...take notice that both courses are built on the side of a large sloping hill. Play the ball down and keep up with the provisional, thanks. Long Drive hole is on Number 3. Same rules apply, Closest to Pin Contest will be on #. 6 and #17. Sign your scorecards after play and turn them in again to the Bar area of the Golf Shop.

Afternoon break and your leisure.

6 P.M. Banquet Award Dinner at Pristine Room (Located at Primm Convention Center)

Beverage on your own. Dinner is a buffet style dinner. You may bring your loved one with you. Primm's catering department prepare dinner for only 80 people (Equal to number of paid players). So the foods supply may be a little short.

Awards and Prizes ceremony immediately after dinner.

Evening entertainment on your own.

Sunday, June 29th, 2003

Check-out time is 12 P.M. Make sure that you gather all belongings before check-out.

We hope you have a good time and plan on playing in the next event.... If you had a *great* time, tell a few friends so that they can join us next time, too! You can send your feedback and suggestions with Victor by email him at either waves3464@aol.com or at victor.v.vannukul@irs.gov



Our former President, Ben Novicki of Charleston, WVA is gloating in this picture after taking his old friends from California to cleaner @ Oak Quarry G.C., Norco, CA. From left to right, Tim Baldwin, Ben Novicki and Larry Taylor. Ben, who just came out of East Coast Winter Hibernation posted an impressive GROSS score of 85. That day Not bad for the guys that have not played competitive golf for almost 6 months! Ben said afterward that he own these guys! Victim not in picture, Victor Vannukul!

Survivors Cup Second Round Results

.....Rick Sackett, Survivors Cup Matches Coordinator

2003 ALSRI Board members

President

Stephen Klotz

Treasurer

Bernard Penafuerte

Competition Chair

Larry Taylor

Asst. Competition Chair

Bryan Inoue

Howard Wu

Tournament Chair

Rick Sackett

Rules Chair

Stan Gin

Archie Nakaoka

Membership and Handicap Chair

Dennis Murakami

Webmaster

Tim Baldwin

Newsletter Editor

Victor Vannukul

Tournament Starter (Vacant)

Member-At-Large

George Murphy

Stan Teragawa

Club website

Www.alsri.com

Survivor Saga:

Statistics plays a big part in sports. It is all about the numbers. In fact, as a "bean counter", I'd have to say that words don't always make sense to me. Numbers make cents to me! For example, in life, it is relatively easy unless you have a big handicap. In golf, it is relatively difficult unless you have a big handicap. In life, you are handicapped if you have a stroke. In golf, if your handicap lets you have a stroke, it's a good thing. Enough with the hypotheating!

When I agreed to take on the duties as the Survivor's Cup coordinator, I wanted to insure two things. One, I wanted to make sure that the luck of the draw didn't factor into the results (i.e.: if you were unlucky enough to be matched up against the "hottest team", you would not necessarily be eliminated). And two, I wanted each player, to be playing his own ball the entire round. To me, two-man scrambles are only semi-satisfying.

I especially want to acknowledge the tremendous, colored score-cards that Dennis Murakami prepared. Not only were they easy to follow, but he had provided a concise and succinct version of the scoring system on the back of them. Just prior to our four-some teeing off the first hole on the North Course at Los Serranos, Jerry Chang mentioned that Dennis had told him that it would probably take a net 64 to survive. Chuck Fullington, said that he had played in a "two-man better ball" tournament the week before and a net 61 had finished first. With these numbers rolling around in my head,

imagine how excited I was to have a net 29 after the front nine. Anyway, here are the statistics:

Survivors:

Hoshi & Kim (Net Total 135/ Better Ball 58); B. Sackett & Fullington (140/60); R. Sackett & Guignard (147/60); Nelson & Law (137/63)

Non-Survivors:

Chang & Wong (145/64); Murakami & Vannukul (143/67); Nakaoka & Gin (151/67); Judd & Brawley (163/68).

Out of 8 teams Net Better Ball there was, 1 Multiple Net Bogey, 13 Net Bogeys, 57 Net Pars, 63 Net Birdies, 9 Net Eagles, and 1 Net Double Eagle (Jim Judd's "Net Zero" on the par 3 10th hole). Only three teams had bogey-free rounds, they all survived. As it turns out the "luck-of-the-draw" was the choosing of the format. Under the round one format (Team Low Net), Dennis Murakami and Victor Vannukul would have traded places with my team and survived. All of the other Survivor's would have survived.

The Third Round of Survivor's Cup will be July 11th, at Santa Anita. The format for Round 3 is Net Alternating Holes, with one "bailout" hole.



Relax before the first round of the ALSRI CUP Match. From left to right, Bob Watson, Rick Sackett, Jim Judd and Bob Henderson

You Know You're a Bad Golfer If... By Tim Baldwin

When I first began to play this game we ultimately became obsessed with, being so bad wasn't a problem. I attributed my inept play to the fact that I really had no idea what I was doing just yet. As time went by, I have taken a lesson or two (Al Valentine is now a millionaire), made a habit of hitting a bucket of balls at least once a week, moved to a golf course community, and even forked over some serious cash for a "real" set of clubs. Now, it's 14 years later and, after all that, I still suck.

Now, you might consider yourself a so-called "bad golfer" because Moses had an easier time getting out of the sand than you do but the inability to make shots and score well are only the tip of the ice berg when it comes to defining a real bad golfer.

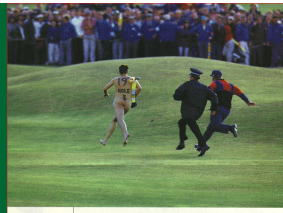
I have compiled a check list of sorts from which you can compare yourself to see if you fit the bill as a real "Bad Golfer."

You know you're a bad golfer if...

- You consider a good round one in which you lost only half-a-dozen balls.
- More than once, you have attempted to return a club because "somehow it snapped."
- You have old, gnarly golf balls in your bag specifically to be used for over water shots.
- You refer to your driver as the "Big Dog" but hit it like a little puppy.
- You "prefer" to hit an iron off every tee.

- You can remember the one good shot you had all day.
- You are told "you're still away" more than twice on the same green.
- You "crush every shot" at the practice range but can't get one more than 10 feet off the ground on the course.
- Your ball retriever is the most often used piece of equipment in your bag.
- There is one hole at your home course on which you can never score below double bogey.
- Your playing partners use the term "nice lag" to describe your putts that never reach the hole.
- You need a sand-blaster to remove the dirt from your clubs from taking divots.
- You blame everything and everyone except yourself for a bad shot.
- A huge sigh of relief occurs when you are chosen as the last one to tee off at the first hole.

"Summer or light clothes (Short) are recommended during our Primm tournament, but not this light!!"



"Drink plenty of liquid and liberally apply good sun block lotion to your body to avoid dehydration and sunburn."

Inside ALSRI.....Golfnut

(The writings of Golfnut do not reflect the opinions of the editor or the ALSRI Golf Club)

In Search of "The Big Dog"!

James "Big Dog" Rhodes has been officially sited on a Golf course. After taking time off because of an aching knee, James has resurfaced with his game apparently intact. We played two rounds of Golf at El Ranch Verde G.C., on Memorial Day, and on Friday, May 30th. Also playing on the 30th were Tim Baldwin and Howard Wu. Spurred on by Tim's smack-talk at the Glendale POD earlier in the week regarding the outcome of the

Memorial Day match, James was prepared for the rematch.

After working out the details of the match, we proceeded to play. On the front 9, James had a 43, and he finished the back with a 47 for a 90 (*Net 2 under 70!*) Not bad for a 20 handicapper. He was swinging his clubs well.

As for the rest of us, we were having varying degrees of success. Howard, despite suffering from an injured pinkie, was reaping the rewards of a recent trip to his swing coach, Doctor Franklstein Howard had been having problems off the tee, so much so that he had resorted to

teeing off with irons! After his visit to Dr. Franklstein, Howie was booming several of his tee shots out past the 280 yd. mark. Tim was also hitting well off the tee, and he had James in constant amazement over his short-iron game, but was having putting problems on the day. As for me, I was striking the ball fairly well. However, I was unable to take advantage of several opportunities to score during the round, and ended up shooting 6 or 7 shots higher than my Memorial day round of 82.

All in all, it was a good time, with plenty of smack being passed out by all parties.

Next up: In Search of Kirk "Cricket" Boswell!

ALSRI GOLF CLUB

C/o V2
1630 Manor Gate Road
Hacienda Heights, CA 91745



Phone: 626-786-2356
Email: waves3464@aol.com

Mailing Address Line 1
Mailing Address Line 2
Mailing Address Line 3
Mailing Address Line 4
Mailing Address Line 5

ALSRI GOLF CLUB TOURNAMENT SIGN-UP FORM

Event: Rancho Park Golf Course

Date: Friday, August 15, 2003
First tee time is 7:30A

Entry Fee: \$46

Player #1: _____

Player #2: _____

Player #3: _____

Player #4: _____

*Mail your check along with
the sign-up form to:*

**ALSRI GOLF CLUB
C/o Bernard Penafuerte
1721 S. Cordova
Alhambra, CA 91801**

Dateline for Rancho Park
Tournament sign-up is
Friday, August 1, 2003

**You may also sign-up your group online at our website at
WWW.ALSRI.COM.**